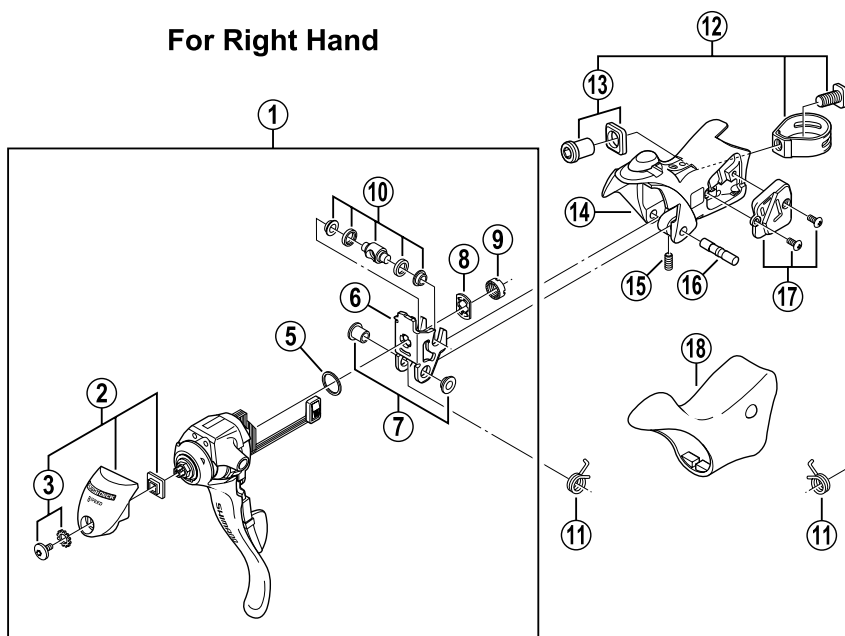


## SHIMANO Dual Control Lever

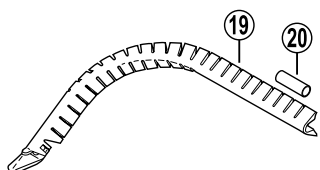
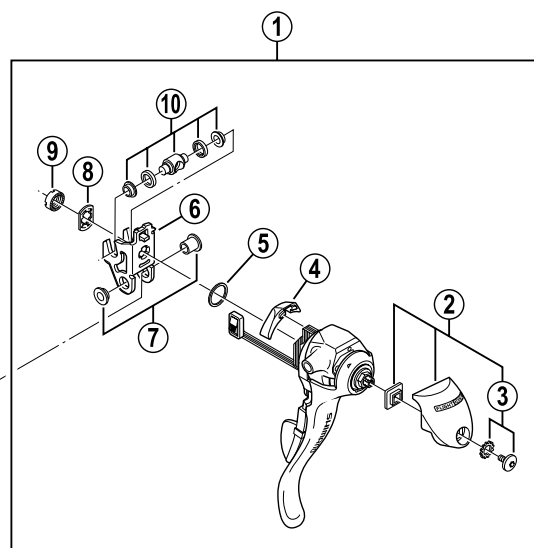
**ST-R500**

FLIGHT DECK Compatible

For Right Hand



For Left Hand



## Special Tools



Q'TY	ITEM NO.	SHIMANO CODE NO.	DESCRIPTION
	1	Y-6J4 98010	R.H. Main Lever Assembly
		Y-6J4 98020	L.H. Main Lever Assembly
	2	Y-6J4 98030	R.H. Front Cover Unit
		Y-6J4 98040	L.H. Front Cover Unit
	3	Y-6CT 98050	Front Cover Fixing Bolt (M3 x 6.5) & Teethed Washer
	4	Y-6BS 71100	L.H. Rear Cover
	5	Y-6CT 25000	Spacer (0.65 mm)
	6	Y-6CT 03000	R.H. Adapter
		Y-6CT 03010	L.H. Adapter
	7	Y-85Z 98010	Lever Axle Bush Unit
	8	Y-6BD39000	Non-Turn Washer
	9	Y-66E 33000	Lock Nut
	10	Y-6BD98110	Cable Hook Unit
		Y-6BD75000	R.H. Return Spring
	11	Y-6BD74000	L.H. Return Spring
	12	Y-6BD98120	Clamp Band Unit (φ 23.8 mm – φ 24.2 mm)
	13	Y-6BD98130	Clamp Nut & Washer
	14	Y-6J4 98050	R.H. Bracket
		Y-6J4 98060	L.H. Bracket
	15	Y-6BD76000	Lever Axle Fixing Screw
	16	Y-6BS 84000	Lever Axle
	17	Y-6CT 98080	R.H. Water-Proof Cap & Fixing Screws (M3 x 6.35)
		Y-6CT 98090	L.H. Water-Proof Cap & Fixing Screws (M3 x 6.35)
	18	Y-6CT 98100	Bracket Covers (Pair)
	19	Y-86B 90010	Outer Cable Guide
	20	Y-877 11000	Outer Cable Joint
	21	Y-130 03000	Lock Nut Removal Tool (TL-ST01)
	22	Y-130 03100	Return Spring Installation Tool (TL-ST02)