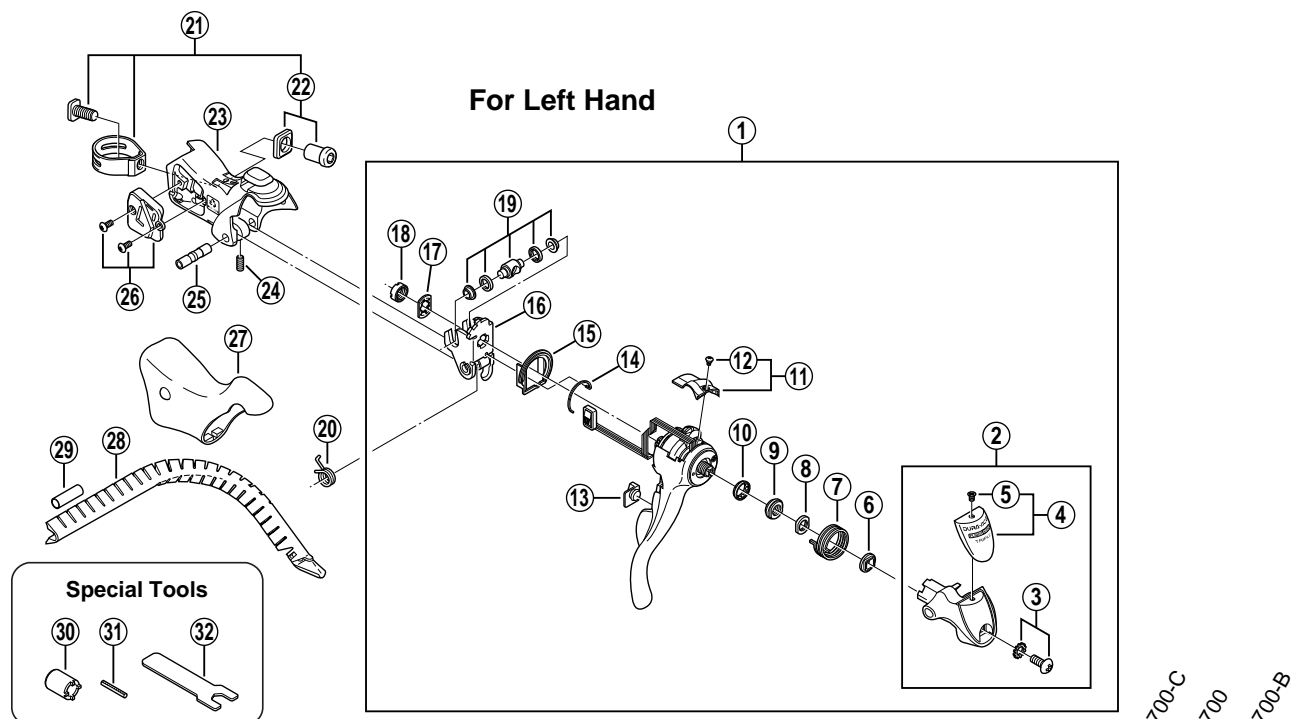


DURA-ACE Dual Control Lever

ST-7703 FLIGHT DECK Compatible



ITEM NO.	SHIMANO CODE NO.	DESCRIPTION	INTERCHANGEABILITY		
1	Y-6FL 98010	L.H. Main Lever Assembly			
2	Y-6FL 98020	L.H. Outer Support Cap Unit			
3	Y-6BD 98050	Cap Fixing Screw (M4 x 10) & Teethed Washer	A	A	A
4	Y-6FL 98040	Name Plate & Fixing Screw	B	B	B
5	Y-6BD 33000	Name Plate Fixing Screw	A	A	A
6	Y-6BD 37000	Bush for Outer Support Cap	A	A	A
7	Y-6BD 60000	L.H. Return Spring for Main Lever	A	A	A
8	Y-6BD 45000	Lock Nut for Cone	A	A	A
9	Y-6BD 48000	Cone	A	A	A
10	Y-6BD 91300	Ball Retainer (1/16" x 12)	A	A	A
11	Y-6FL 98030	L.H. Front Cover & Fixing Screw			
12	Y-6CX 48000	Front Cover Fixing Screw	A		A
13	Y-6CX 10010	L.H. Release Lever Support Plate	A		A
14	Y-67D 38000	L.H. Release Plate Return Spring	A	A	A
15	Y-6CX 64000	L.H. Dust Seal	A		A
16	Y-6BD 90800	L.H. Adapter	A	A	A
17	Y-6BD 39000	Non-Turn Washer	A	A	A
18	Y-66E 33000	Lock Nut	A	A	A
19	Y-6BD 98110	Cable Hook Unit	A	A	A
20	Y-6BD 74000	L.H. Return Spring	A	A	A
21	Y-6BD 98120	Clamp Band Unit (φ 23.8 mm – φ 24.2 mm)	A	A	A
22	Y-6BD 98130	Clamp Nut & Washer	A	A	A
23	Y-6FL 98050	L.H. Bracket			
24	Y-6BD 76000	Lever Axle Fixing Screw	A	A	A
25	Y-6BD 85000	Lever Axle	A	A	A
26	Y-6CX 98150	L.H. Water-Proof Cap & Fixing Screws (M3 x 6.35)	A		
27	Y-6CX 98110	Bracket Covers (Pair)	A		
28	Y-86B 90010	Outer Cable Guide	A	A	A
29	Y-877 11000	Outer Cable Joint	A	A	A
30	Y-130 03000	Lock Nut Removal Tool (TL-ST01)	A	A	A
31	Y-130 03100	Return Spring Installation Tool (TL-ST02)	A	A	A
32	Y-6BD 00010	Cone Adjusting Spanner	A	A	A


A : Same parts.

B : Parts are usable, but differ in materials, appearance, finish, size, etc.

Absence of mark indicates non-interchangeability.

0106-2079

Specifications are subject to change without notice.

© 2001 by Shimano Inc. 

SHIMANO®