



**SHIMANO (EUROPA) GmbH.**

Kleinhülsen 1-3 4010 Hilden,  
West Germany Tel. 02103-5005-0

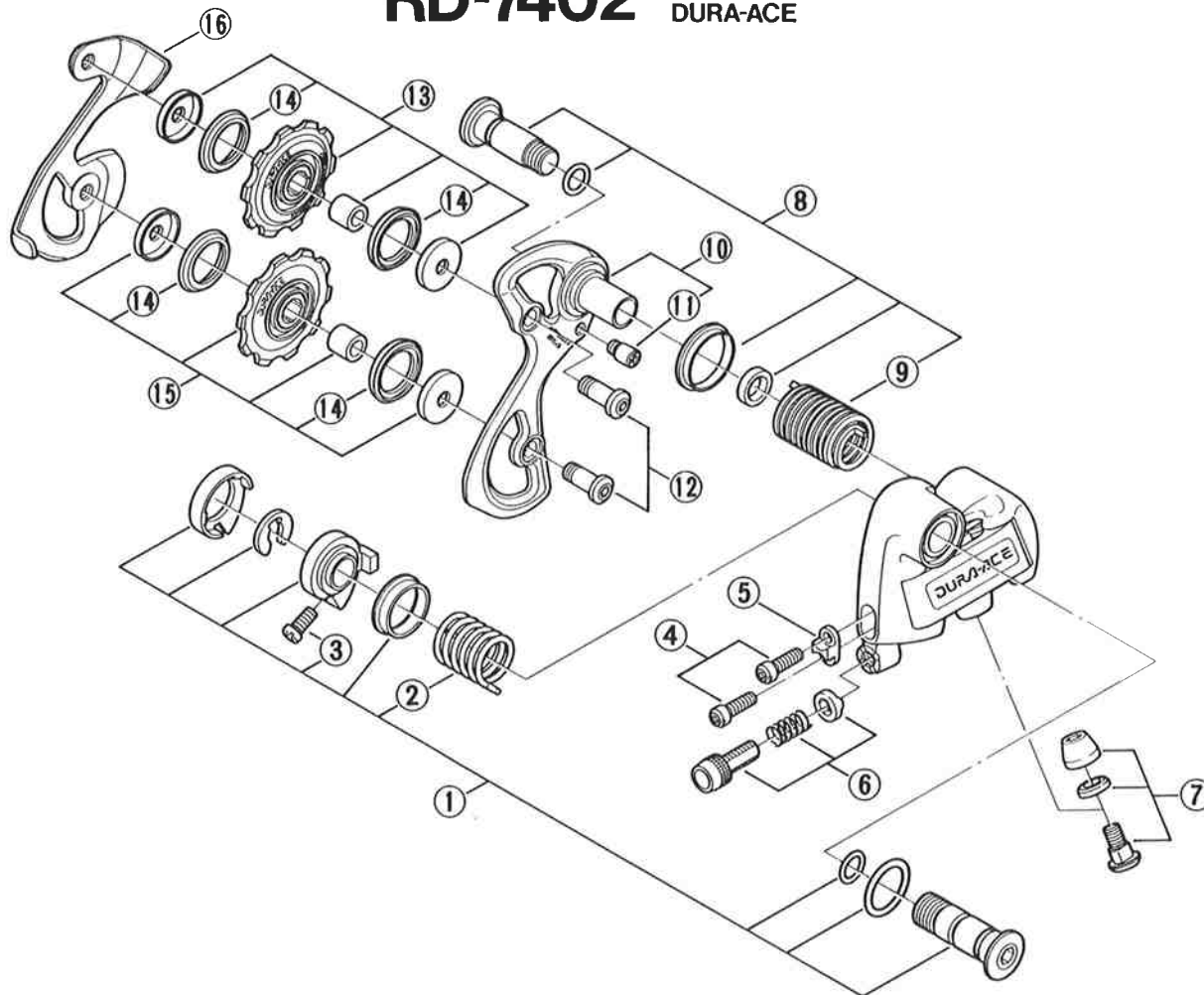
**SHIMANO AMERICAN CORPORATION**

One Shimano Drive, Irvine, California  
U.S.A. 92718 Tel. (714) 951-5003

## Small parts list for after market.

- You may photocopy this sheet and use it as an order form.
- Sie können dieses Blatt kopieren und als Bestellformular verwenden.
- Vous pouvez photocopier cette feuille et l'utiliser comme bon de commande.
- Dit blad kan gecopieerd en als bestelformulier gebruikt worden.
- Potete fotocopiare questo foglio e usarlo come modulo di commissione.

### RD-7402 Rear Derailleur DURA-ACE



Q'TY	ITEM NO.	PART NO.	DESCRIPTION
	1	54A 9801	Bracket Axle Assembly
	* 2	54A 2200	B-Tension Spring
	3	511 0501	B-Tension Adjusting Bolt (M4x10)
	4	560 9809	Stroke Adjusting Screws (M4x11.5) 2pcs.
	5	560 0600	Stroke Adjusting Plate
	* 6	54A 9803	Cable Adjusting Barrel Unit
	7	530 9804	Cable Fixing Bolt Unit
	* 8	54A 9804	Plate Axle Assembly
	9	560 1510	P-Tension Spring
	* 10	54A 9805	Outer Plate & Plate Stopper Screw
	11	559 1900	Plate Stopper Screw
	12	54A 9806	Pulley Bolts (2pcs.)
	13	54A 9808	Guide Pulley Unit
	14	53B 1800	Pulley Seal Ring
	15	54A 9810	Tension Pulley Unit
	* 16	54A 0800	Inner Plate