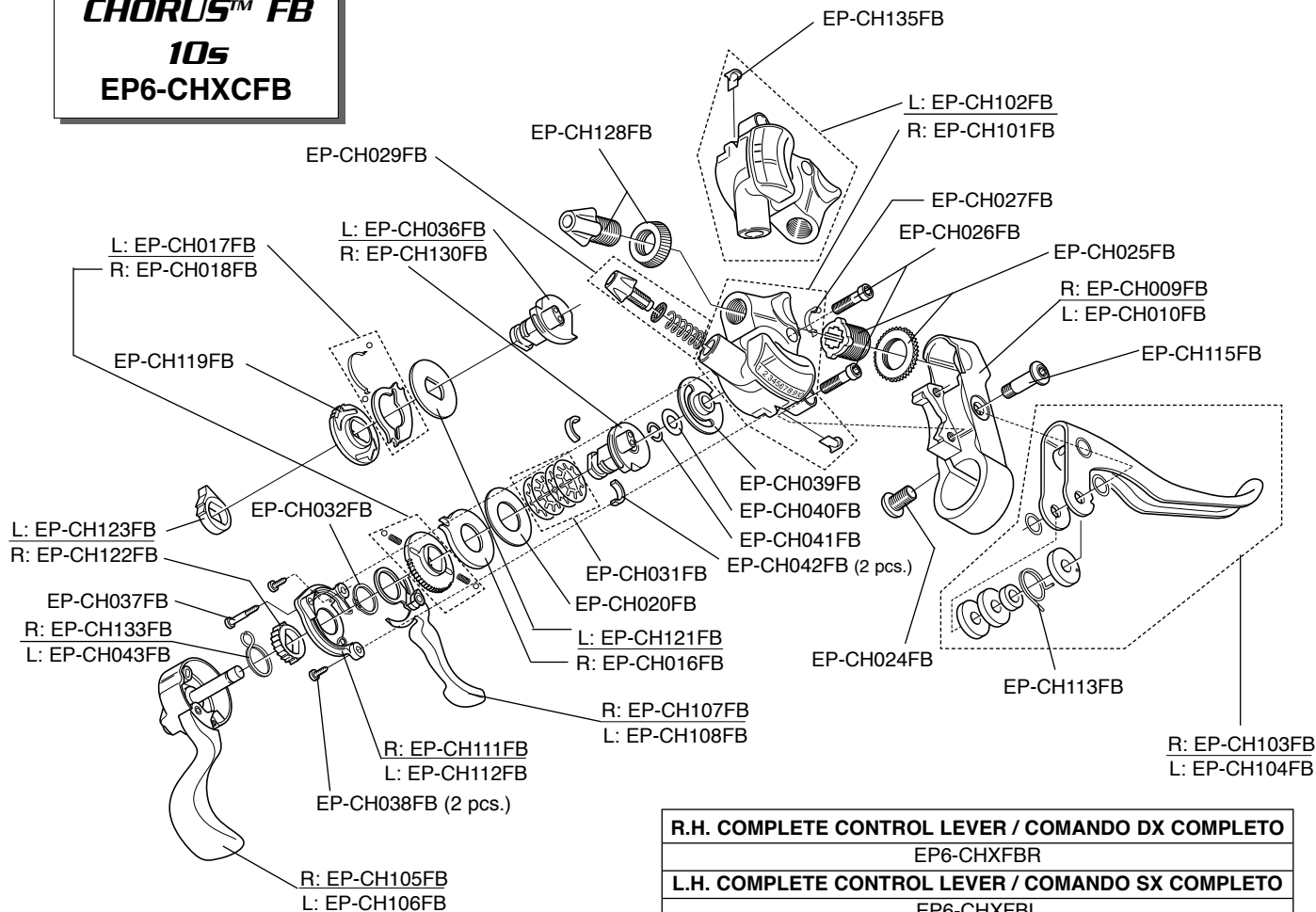


CHORUS™ FB
10s
EP6-CHXCFB



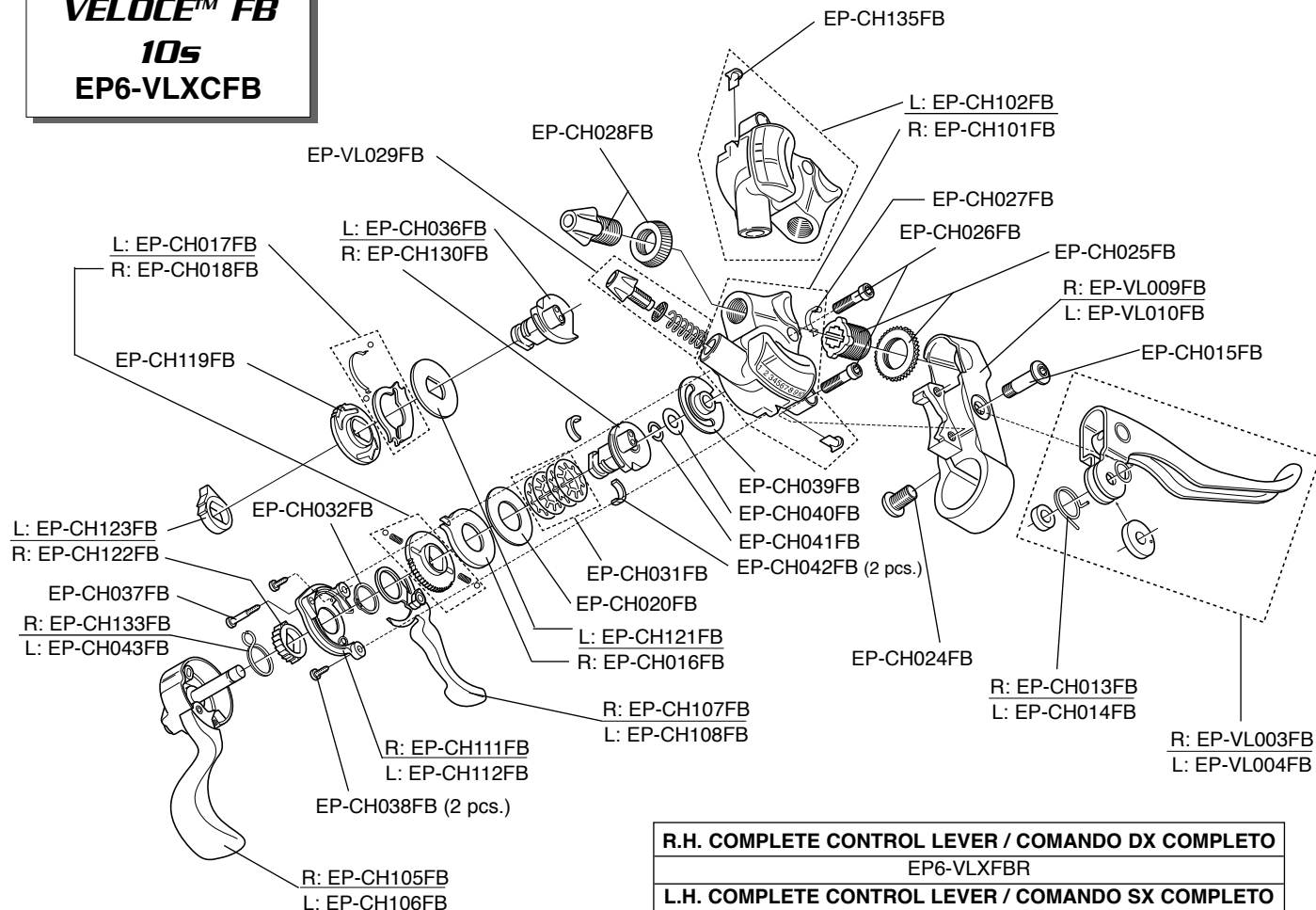
R.H. COMPLETE CONTROL LEVER / COMANDO DX COMPLETO

EP6-CHXFBR

L.H. COMPLETE CONTROL LEVER / COMANDO SX COMPLETO

EP6-CHXFBL

VELOCE™ FB 10s EP6-VLXCFB



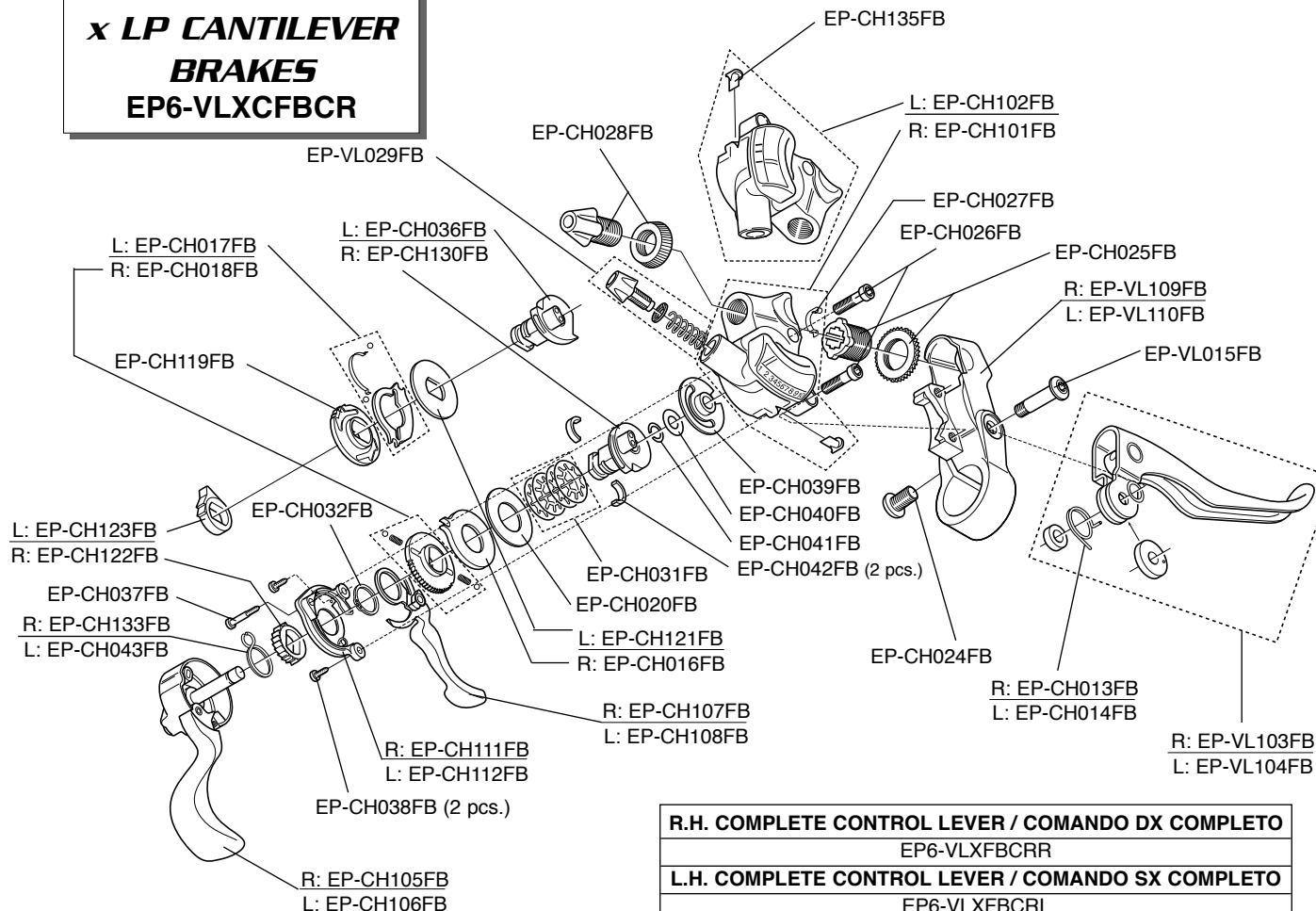
R.H. COMPLETE CONTROL LEVER / COMANDO DX COMPLETO

EP6-VLXFBR

L.H. COMPLETE CONTROL LEVER / COMANDO SX COMPLETO

EP6-VLXFBL

VELOCE™ FB 10s
x LP CANTILEVER
BRAKES
EP6-VLXCFCR



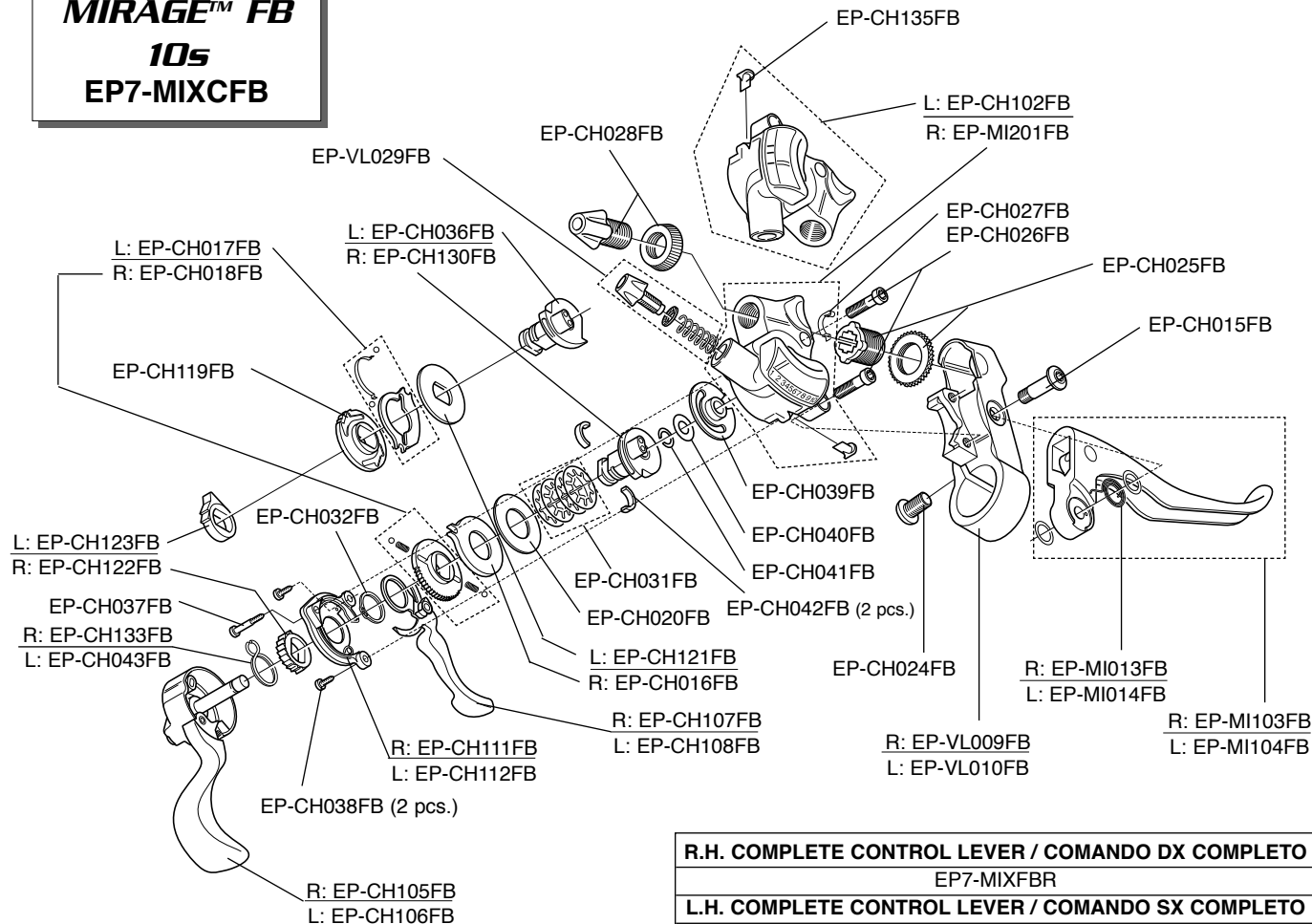
R.H. COMPLETE CONTROL LEVER / COMANDO DX COMPLETO

EP6-VLXCFCRR

L.H. COMPLETE CONTROL LEVER / COMANDO SX COMPLETO

EP6-VLXCFCRL

MIRAGE™ FB 10s EP7-MIXCFB



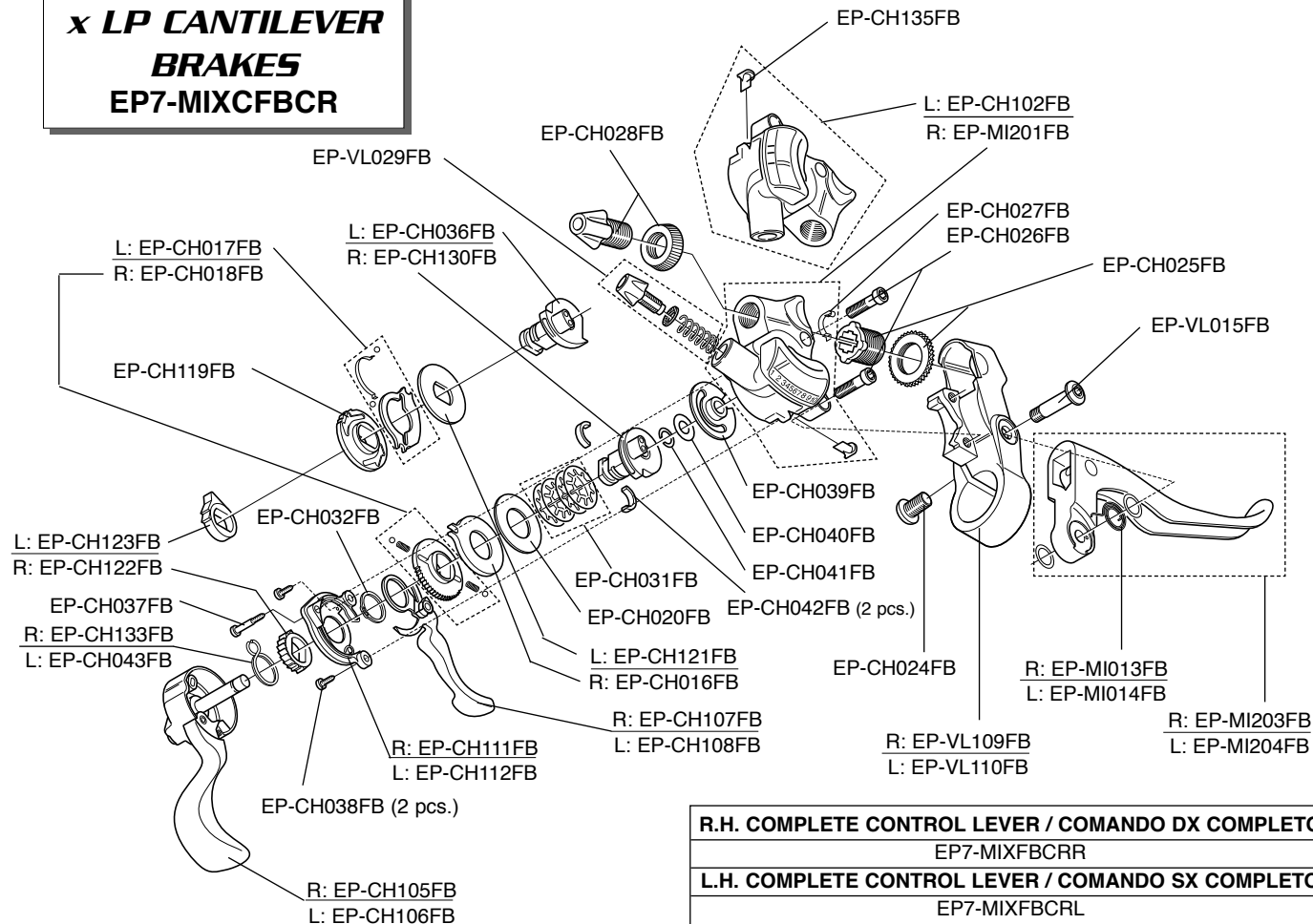
R.H. COMPLETE CONTROL LEVER / COMANDO DX COMPLETO

EP7-MIXFBR

L.H. COMPLETE CONTROL LEVER / COMANDO SX COMPLETO

EP7-MIXFBL

MIRAGE™ FB 10s
x LP CANTILEVER
BRAKES
EP7-MIXCFBCR



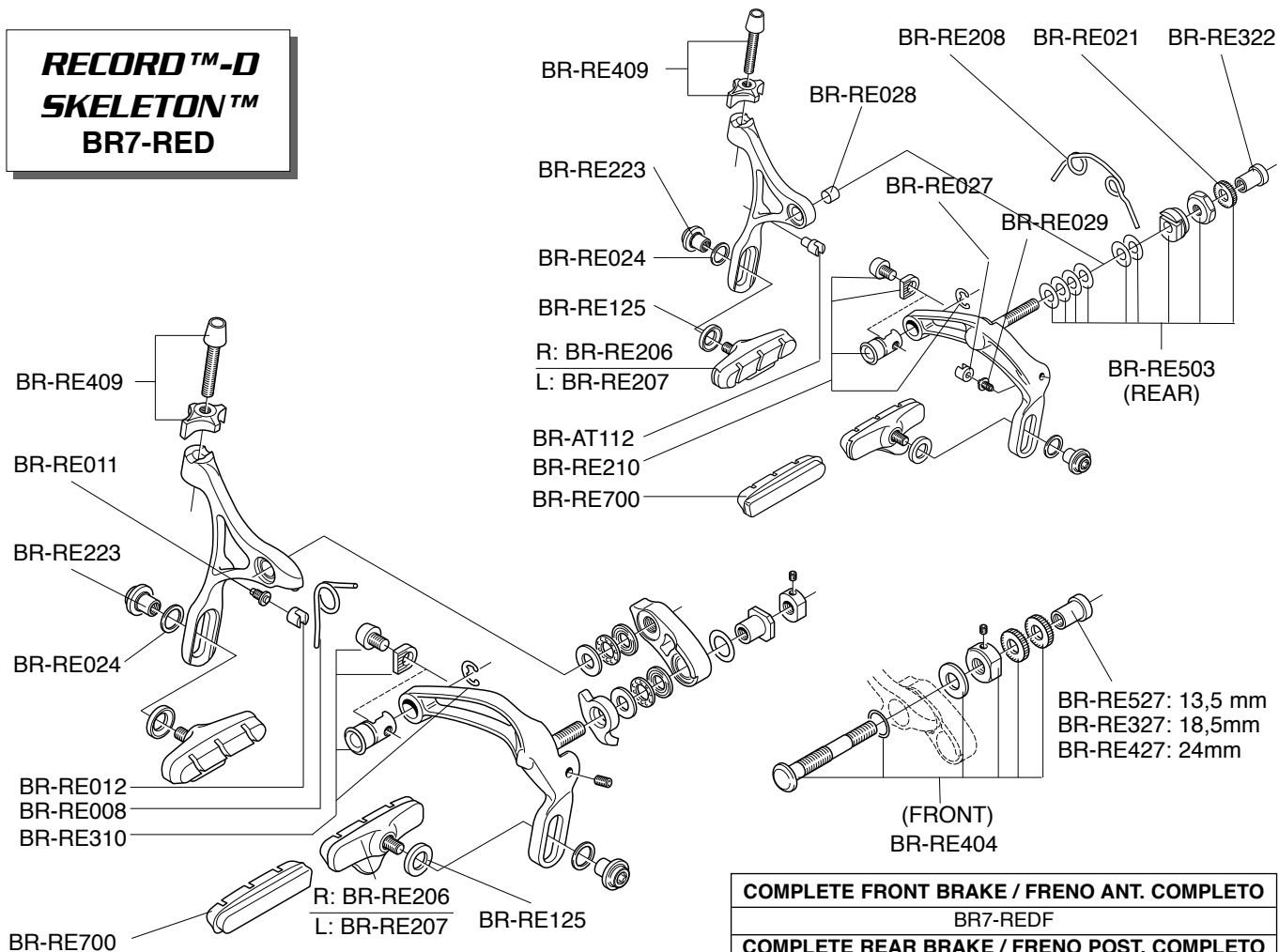
R.H. COMPLETE CONTROL LEVER / COMANDO DX COMPLETO

EP7-MIXFBCRR

L.H. COMPLETE CONTROL LEVER / COMANDO SX COMPLETO

EP7-MIXFBCRL

RECORD™-D **SKELETON™** **BR7-RED**



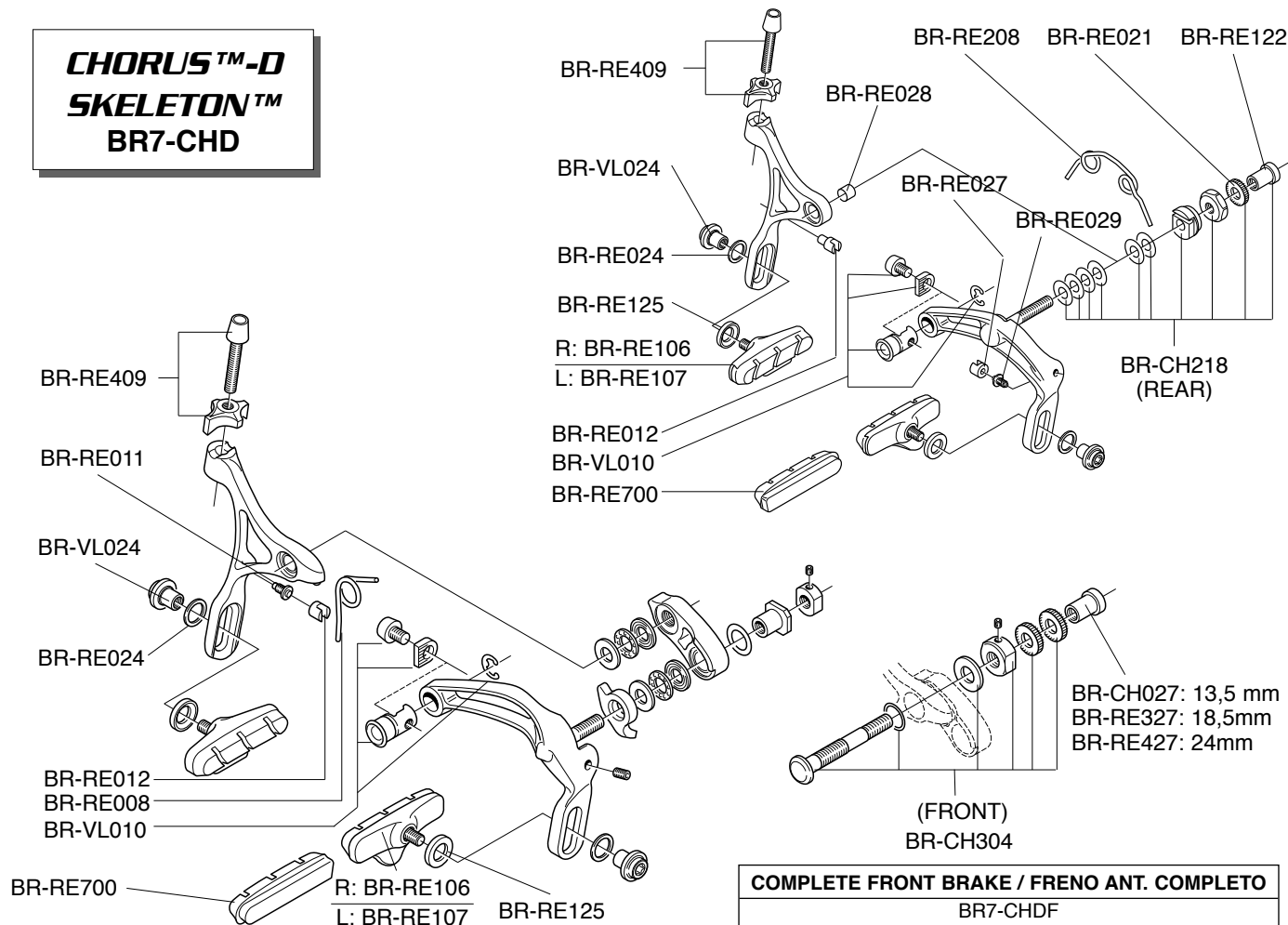
COMPLETE FRONT BRAKE / FRENO ANT. COMPLETO

BR7-REDF

COMPLETE REAR BRAKE / FRENO POST. COMPLETO

BR7-REDR

CHORUS™-D
SKELETON™
BR7-CHD



COMPLETE FRONT BRAKE / FRENO ANT. COMPLETO

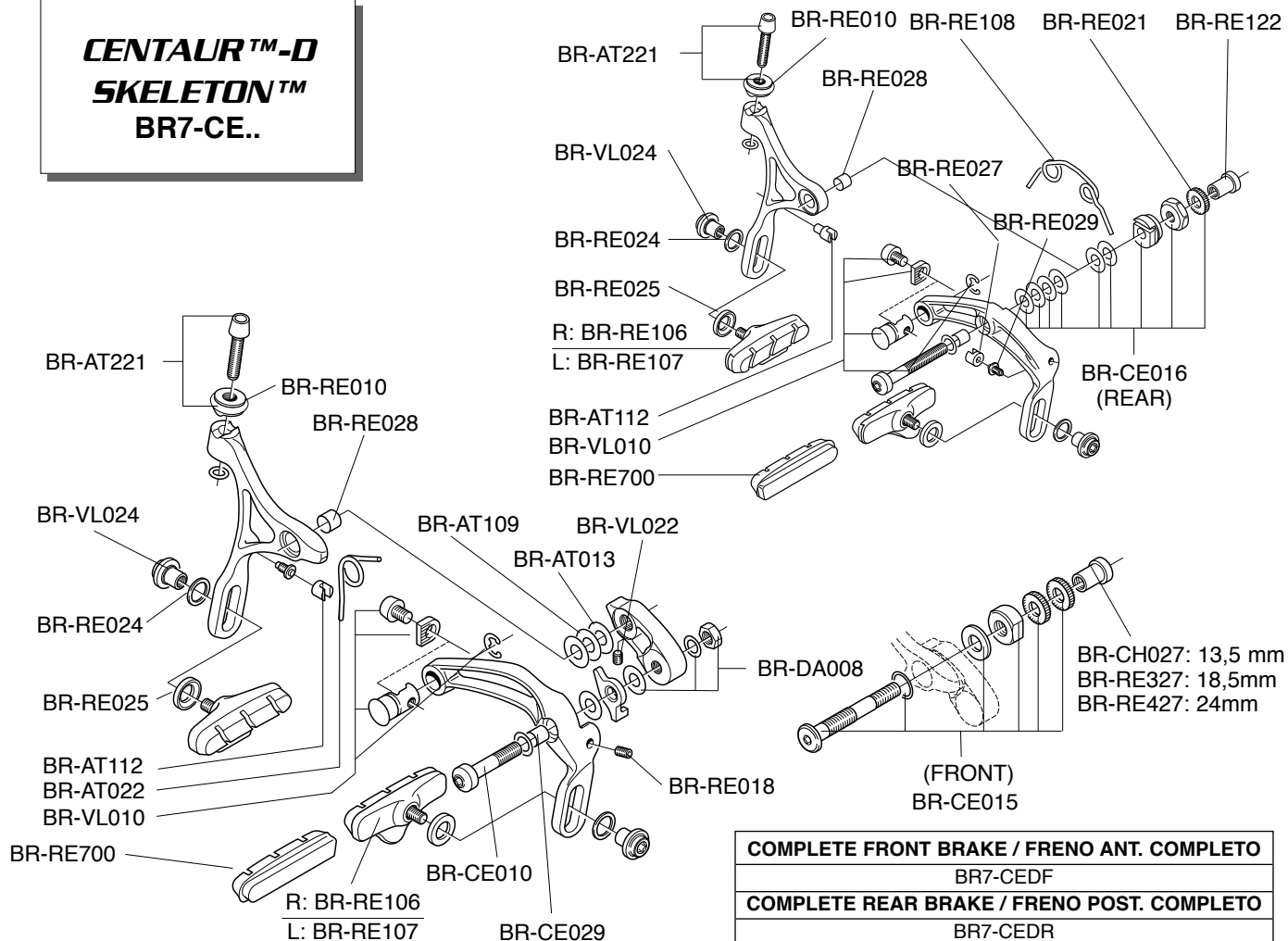
BR7-CHDF

COMPLETE REAR BRAKE / FRENO POST. COMPLETO

BR7-CHDR

BRAKES

CENTAUR™-D **SKELETON™** **BR7-CE..**



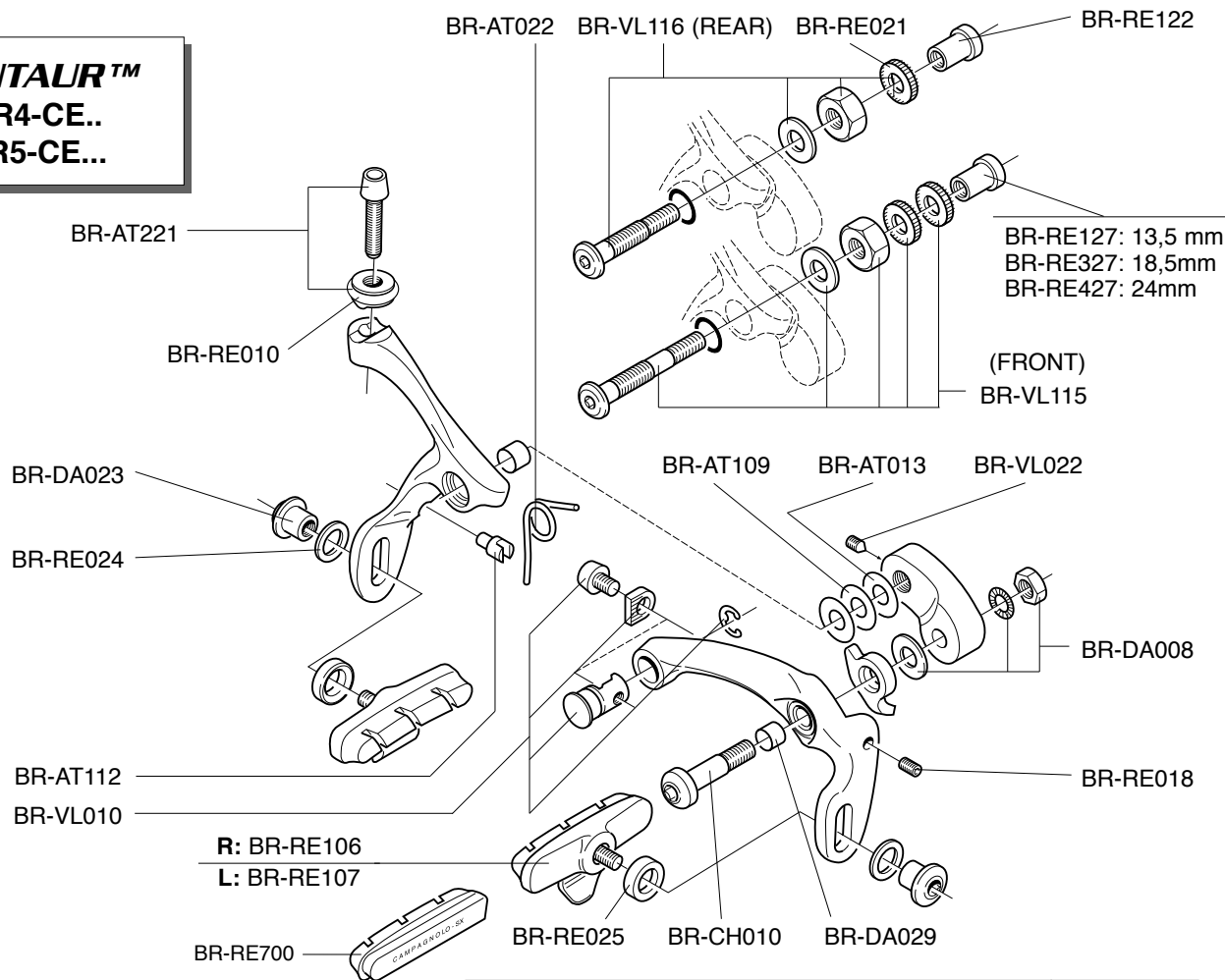
COMPLETE FRONT BRAKE / FRENO ANT. COMPLETO

BR7-CEDF

COMPLETE REAR BRAKE / FRENO POST. COMPLETO

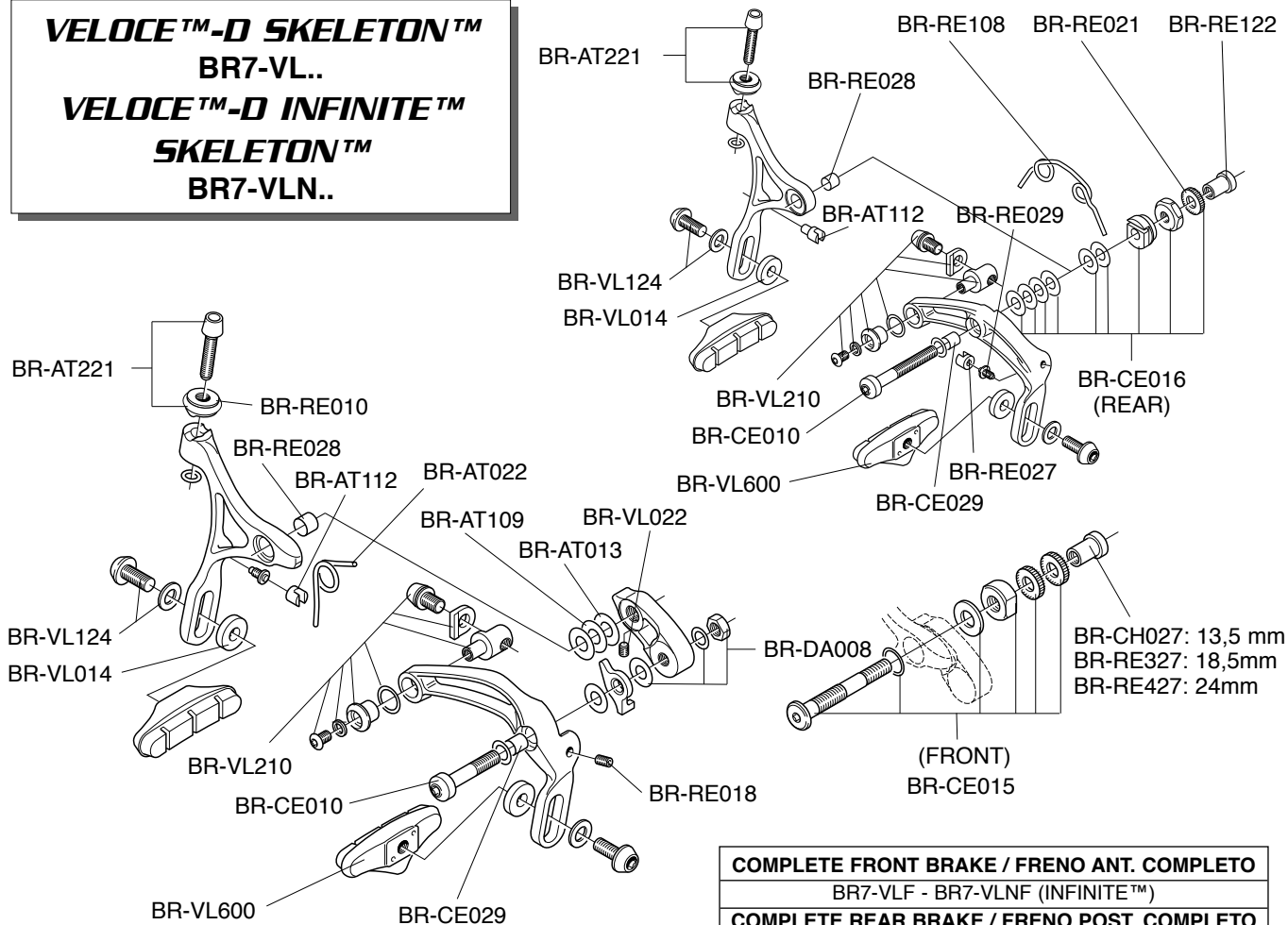
BR7-CEDR

CENTAUR™
BR4-CE..
BR5-CE...



COMPLETE FRONT BRAKE / FRENO ANT. COMPLETO	BR4-CEF
COMPLETE REAR BRAKE / FRENO POST. COMPLETO	BR4-CER

VELOCE™-D SKELETON™
BR7-VL..
VELOCE™-D INFINITE™
SKELETON™
BR7-VLN..



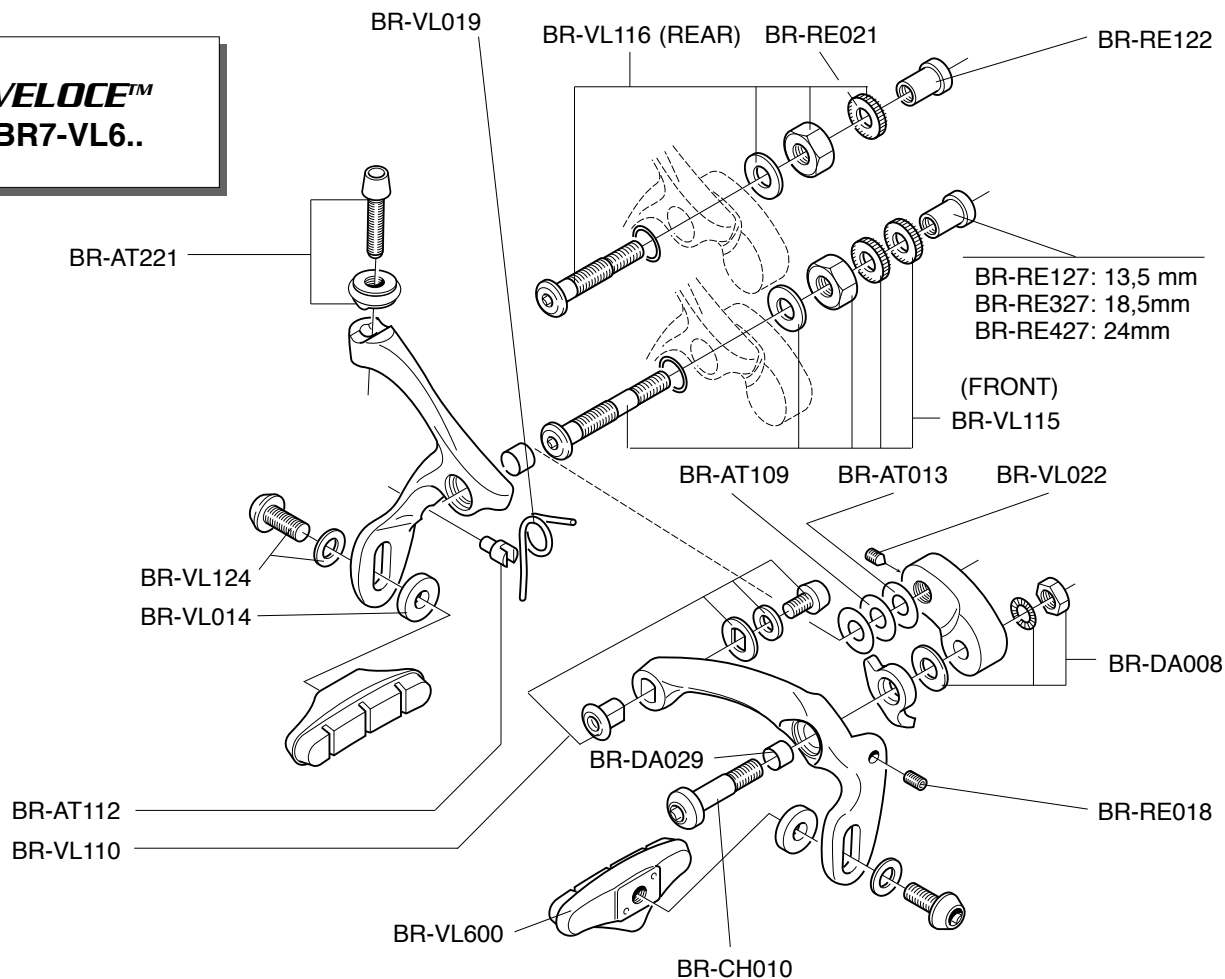
COMPLETE FRONT BRAKE / FRENO ANT. COMPLETO

BR7-VLF - BR7-VLNF (INFINITE™)

COMPLETE REAR BRAKE / FRENO POST. COMPLETO

BR7-VLR - BR7-VLNR (INFINITE™)

VELOCE™
BR7-VL6..



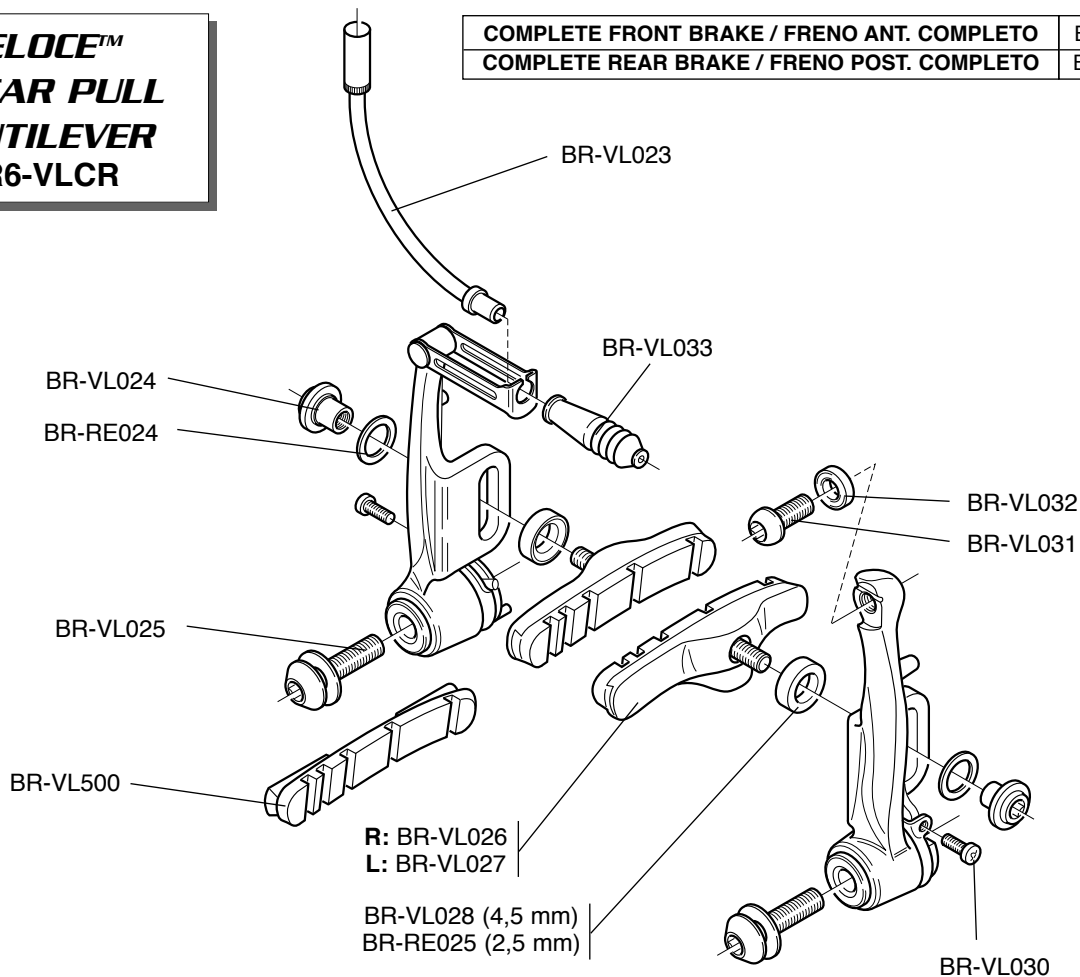
COMPLETE FRONT BRAKE / FRENO ANT. COMPLETO
COMPLETE REAR BRAKE / FRENO POST. COMPLETO

BR7-VL6F
BR7-VL6R

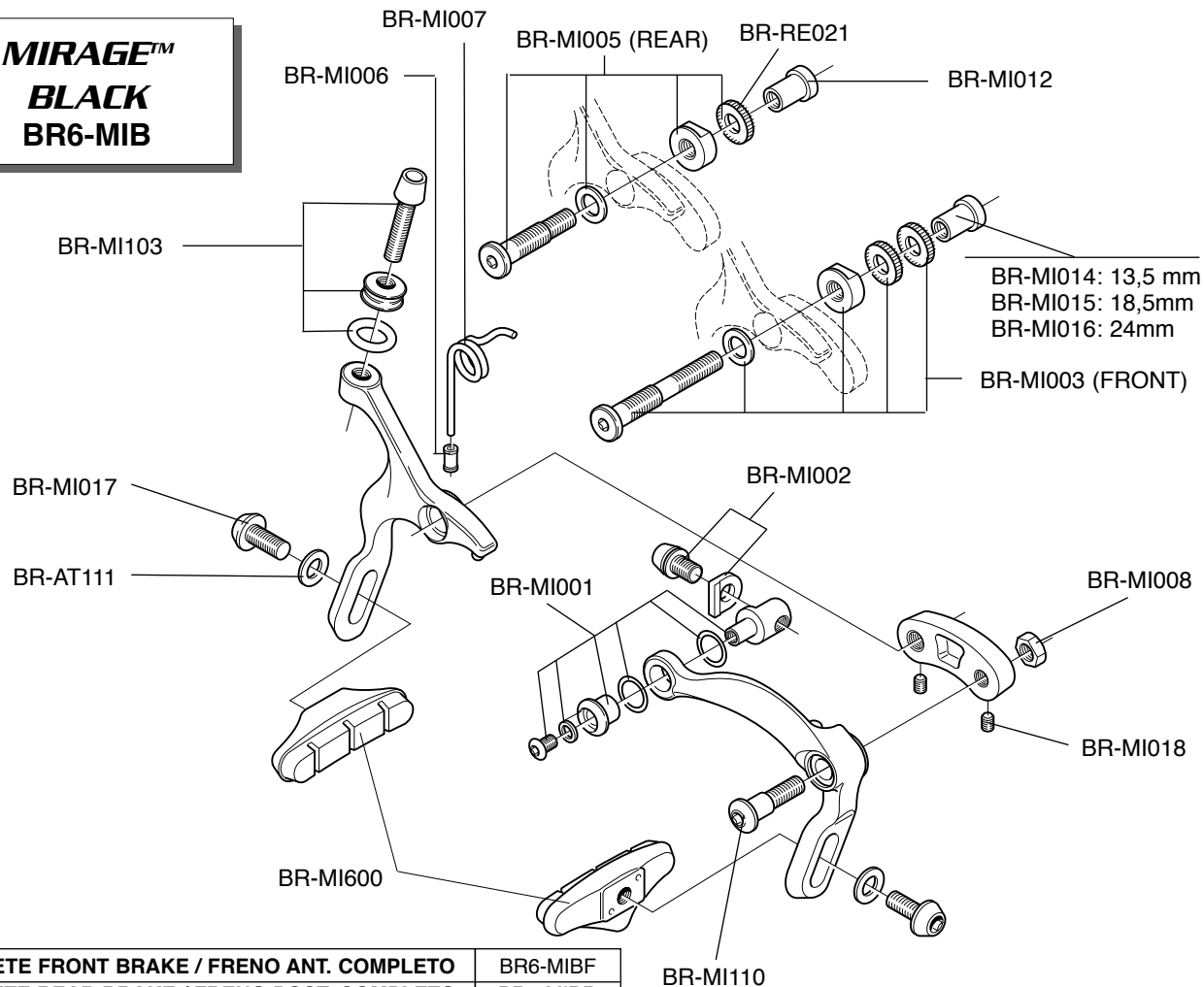
VELOCE™
LINEAR PULL
CANTILEVER
BR6-VLCR

COMPLETE FRONT BRAKE / FRENO ANT. COMPLETO
COMPLETE REAR BRAKE / FRENO POST. COMPLETO

BR6-VLCRF
 BR6-VLCRR



MIRAGE™
BLACK
BR6-MIB



COMPLETE FRONT BRAKE / FRENO ANT. COMPLETO

BR6-MIBF

COMPLETE REAR BRAKE / FRENO POST. COMPLETO

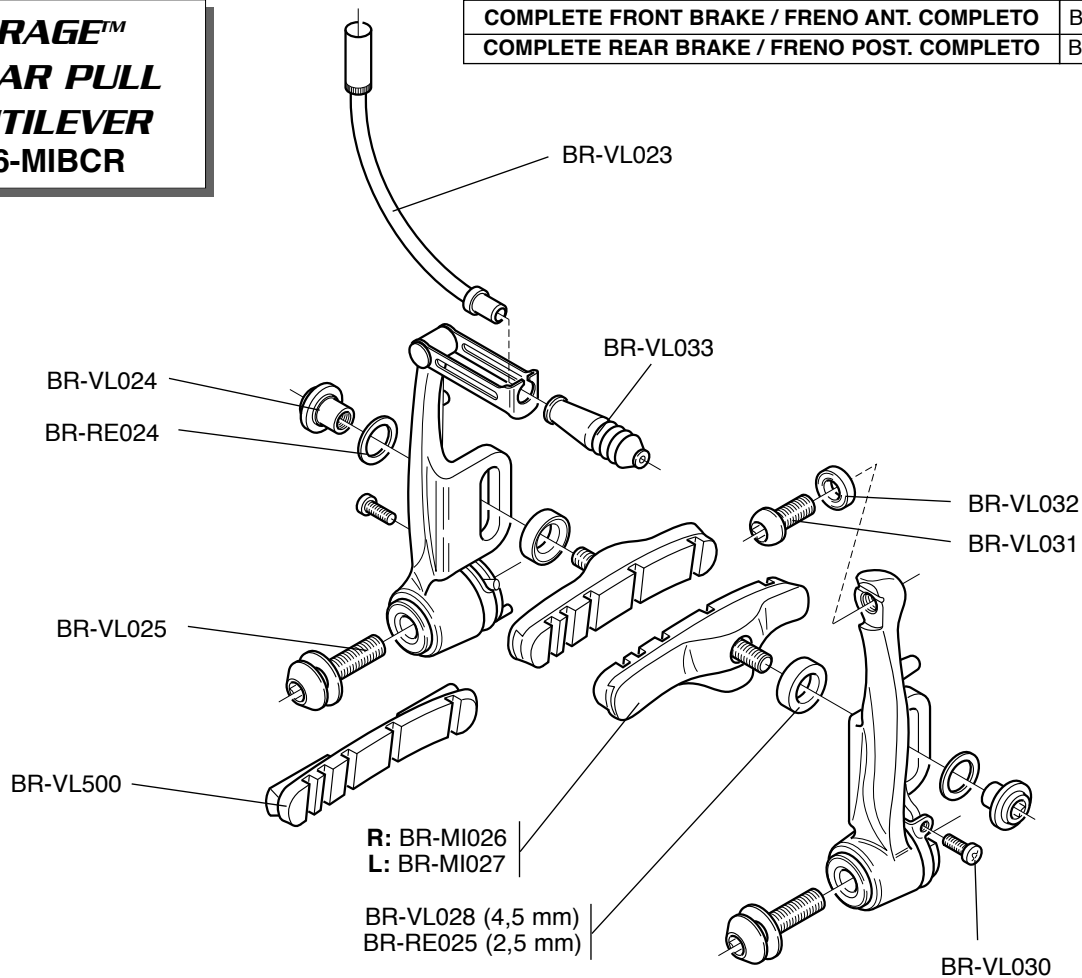
BR6-MIBR

MIRAGE™
LINEAR PULL
CANTILEVER
BR6-MIBCR

COMPLETE FRONT BRAKE / FRENO ANT. COMPLETO
COMPLETE REAR BRAKE / FRENO POST. COMPLETO

BR6-MIBCRF

BR6-MIBCRR



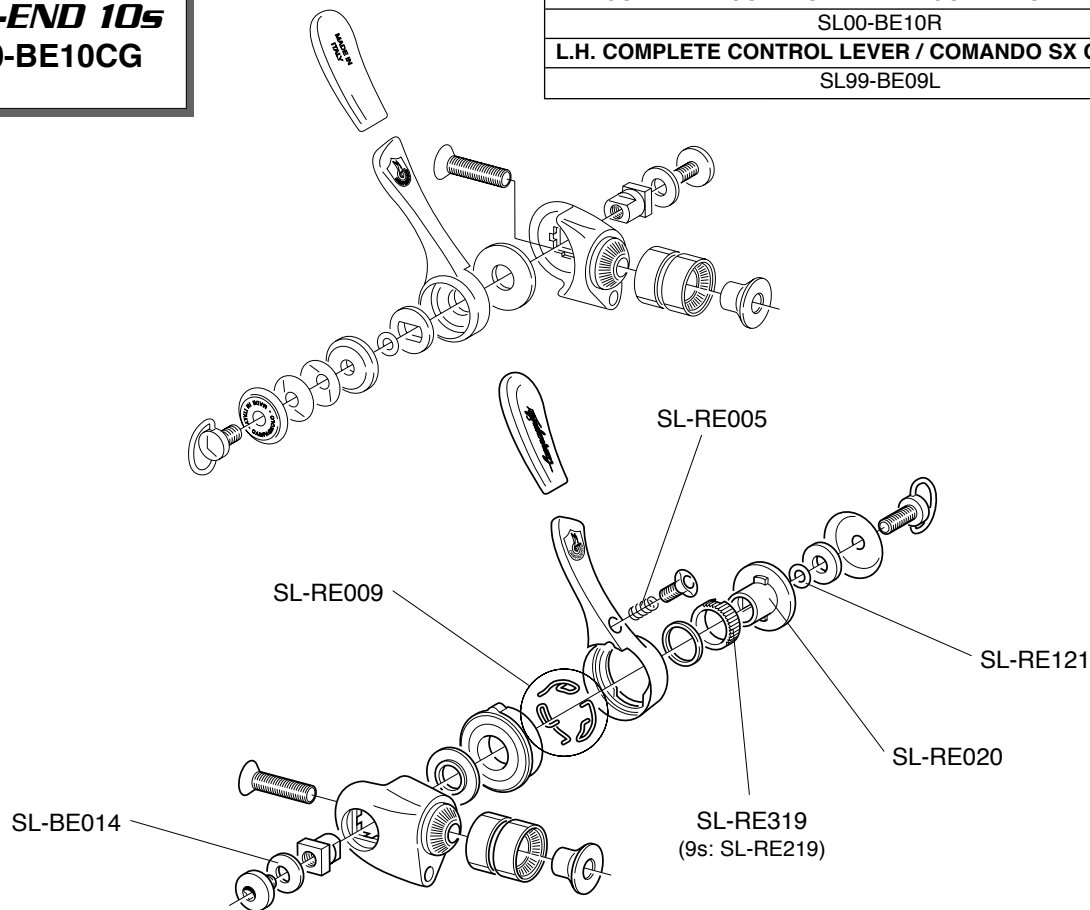
BAR-END 10s
SL00-BE10CG

R.H. COMPLETE CONTROL LEVER / COMANDO DX COMPLETO

SL00-BE10R

L.H. COMPLETE CONTROL LEVER / COMANDO SX COMPLETO

SL99-BE09L



RECORD™
Carbon
BL01-RECGC

EC-RE203

R: BL-RE031

L: BL-RE032

R.H. COMPLETE / DX COMPLETO

BL01-RECR

L.H. COMPLETE / SX COMPLETO

BL01-RECL

R: EC-RE124

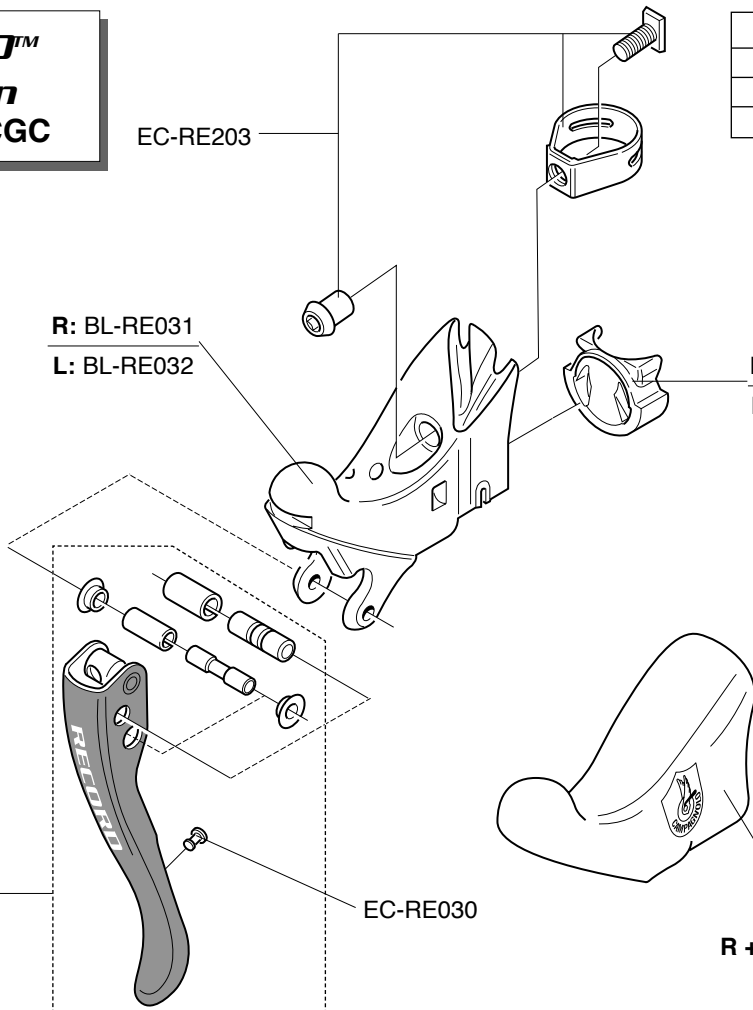
L: EC-RE059

R: EC-RE447

L: EC-RE348

EC-RE030

R + L: EC-RE600



SILVER

QF6-20 (front)

QR6-20 (rear)

BLACK

QF6-20B (front)

QR6-20B (rear)

SILVER

QF6-30 (front)

QR6-30 (rear)

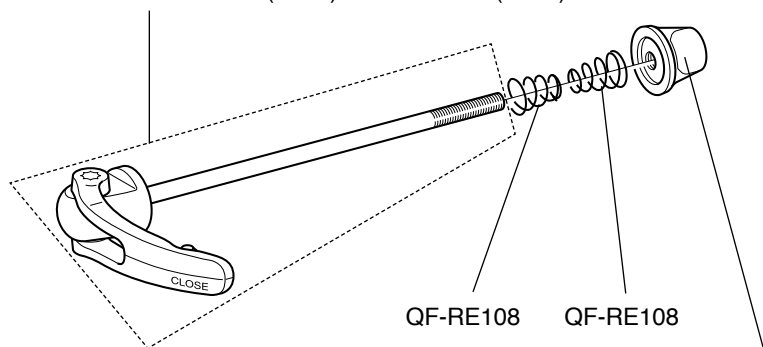
BLACK

QF6-30B (front)

QR6-30B (rear)

FRONT: QF-20001 (silver) - QF-20001B (black)

REAR: QR-20001 (silver) - QR-20001B (black)



20: QF-20002 (silver) - QF-20002B (black)

30: QF-30002 (silver) - QF-30002B (black)

SILVER

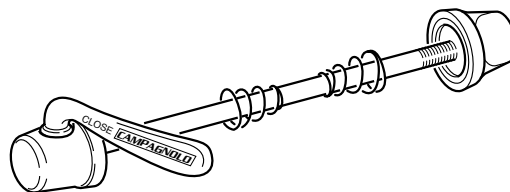
QF6-40 (front)

QR6-40 (rear)

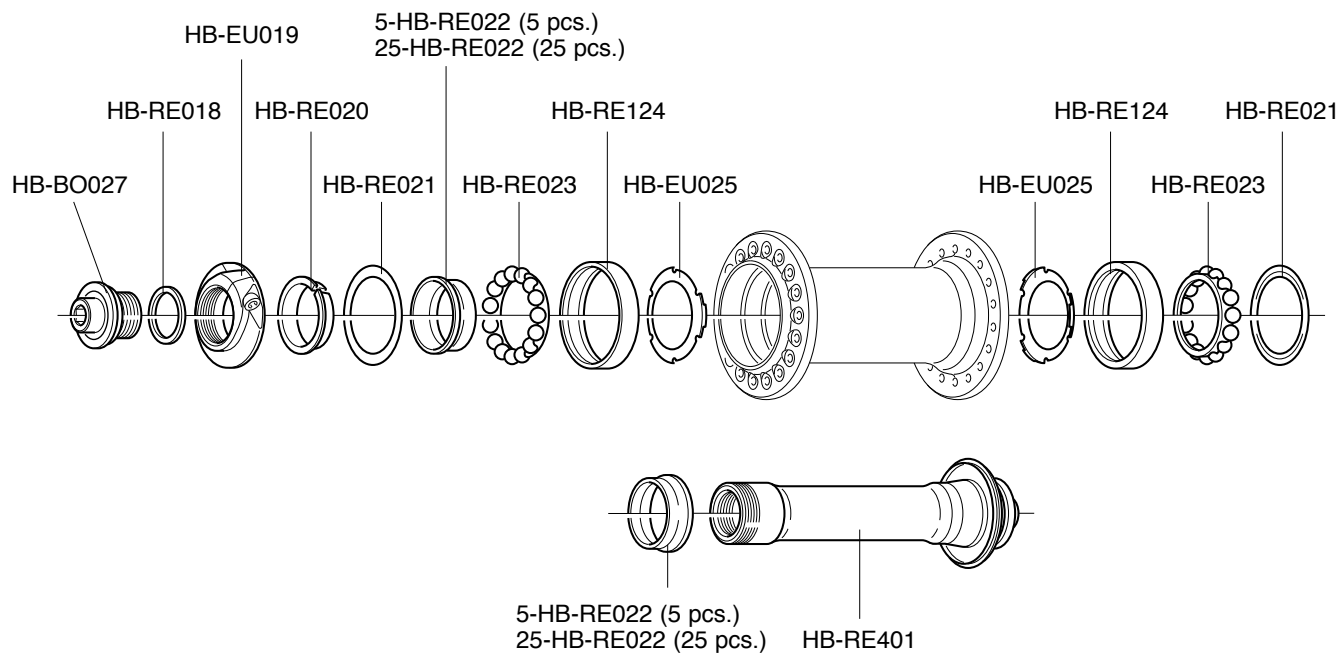
BLACK

QF6-40B (front)

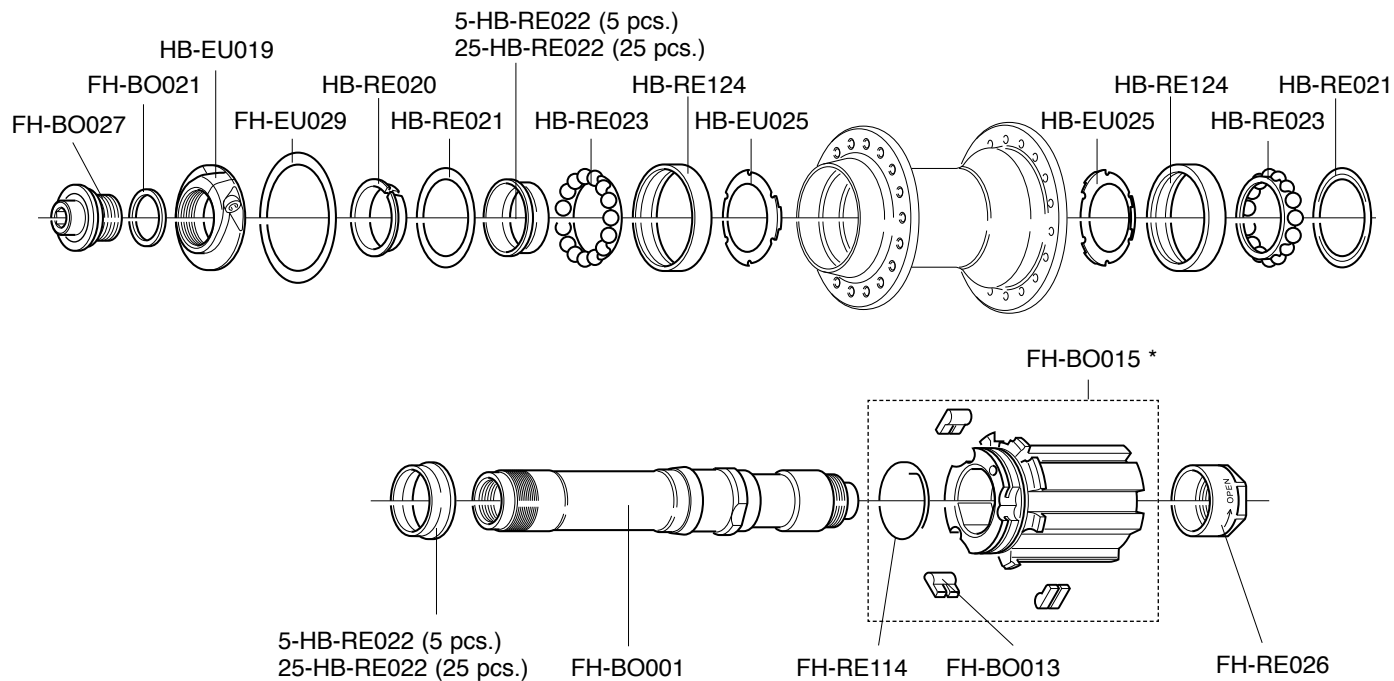
QR6-40B (rear)



RECORD™ **HB7-RE..**



RECORD™ 9s/10s
FH7-RE..



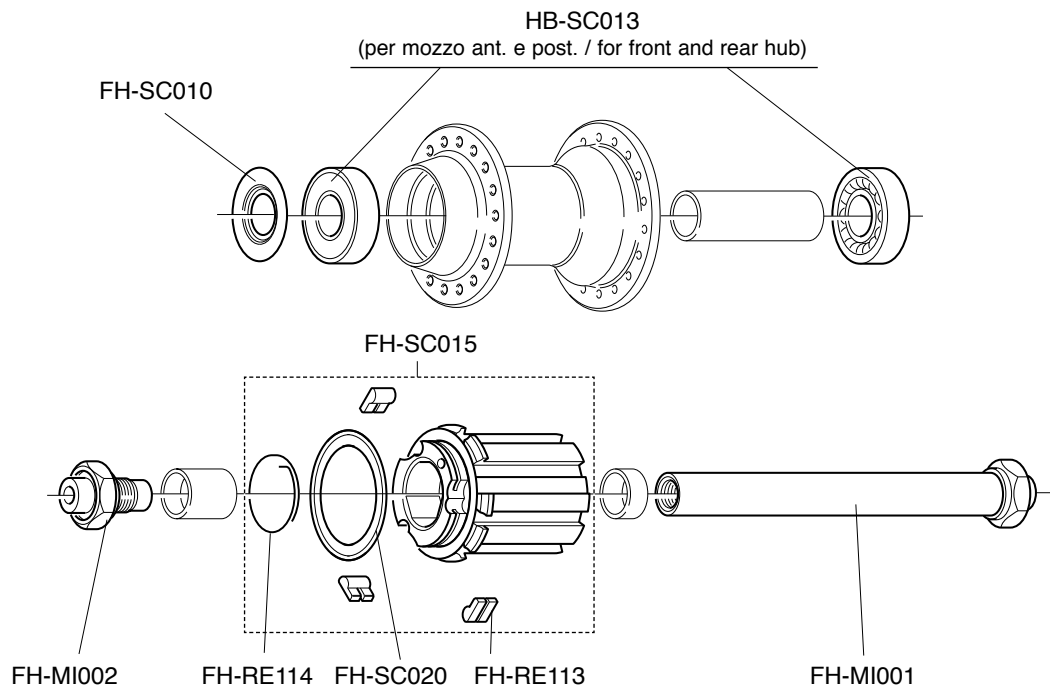
* compatible only with new axle code FH-BO001

CENTAUR™ 9s/10s

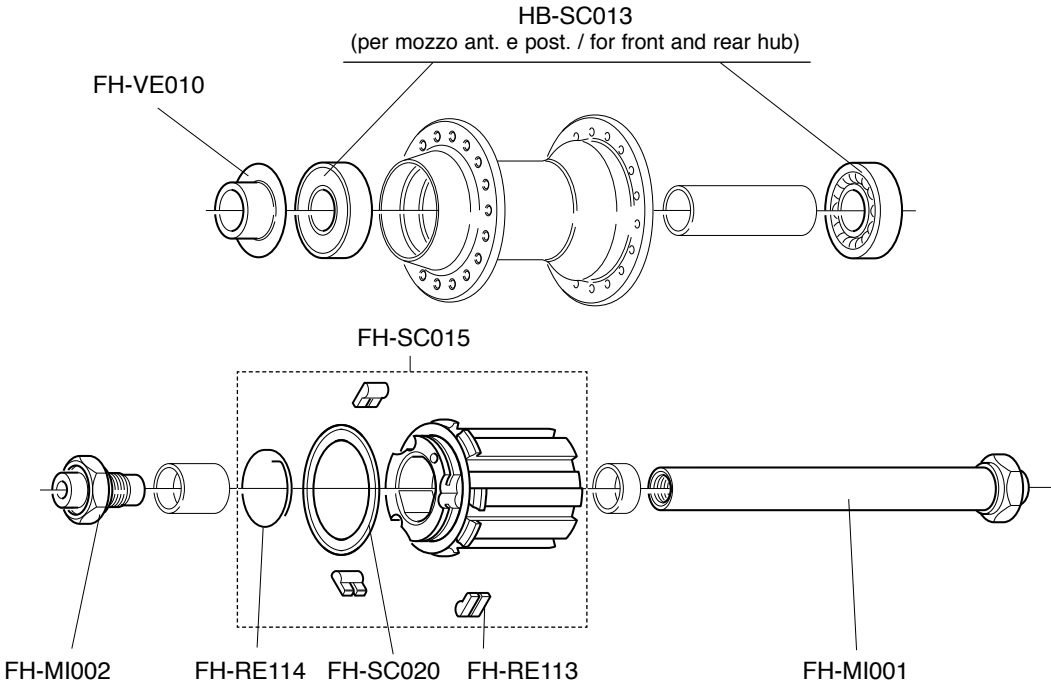
FH7-CE.

VELOCE™ 9s/10s

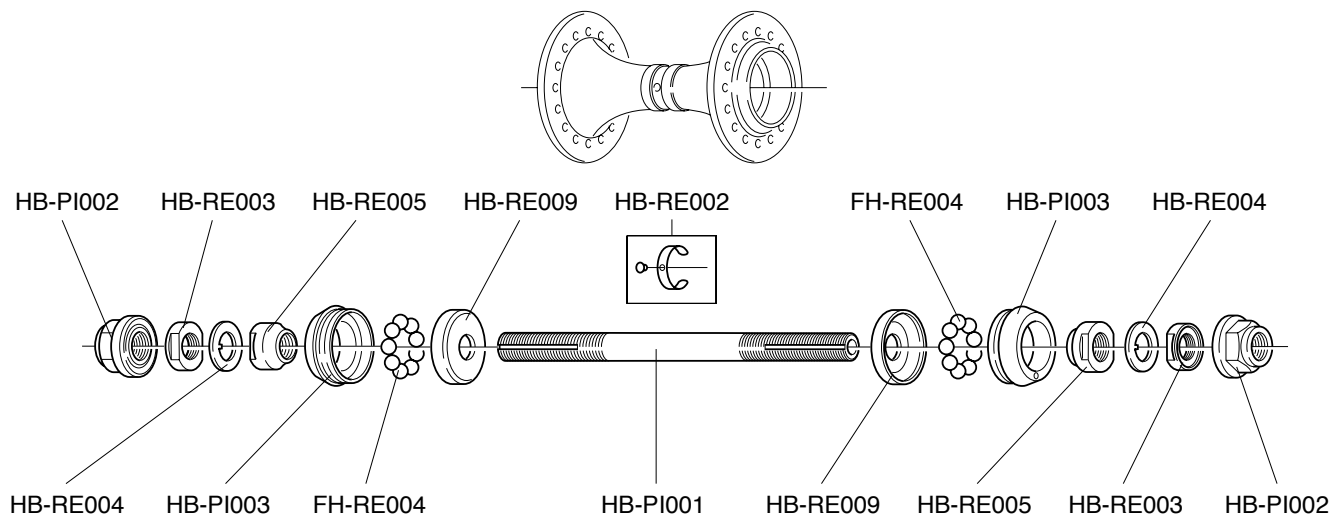
FH7-VL..



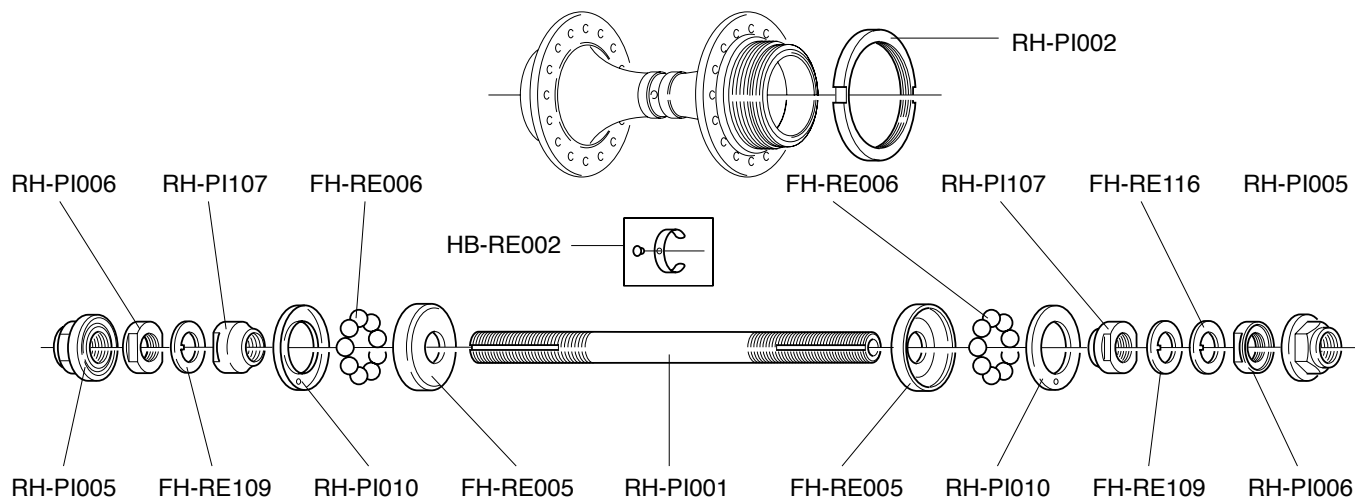
MIRAGE™ 9s/10s
FH7-MI..



RECORD™
PISTA™
HB02-REPI..



RECORD™
PISTA™
FH02-REPI..



REAR HUB



**GHIERE
LOCKRINGS**

**ECROUS
VERSCHLUSSRING**

CODE CODICE	TYPE TIPO		RANGE GAMMA	HUB COMPATIBILITY COMPATIBILITÀ MOZZI
CS-401	9s / 10s "oversize" thread/fil.: 27 x 1	steel / acciaio	2000 e succ. 2000 and following	all groups / tutti i gruppi all wheels / tutte le ruote
			1999	RECORD™ - CHORUS™ all wheels / tutte le ruote
CS-501	9s / 10s "oversize" thread/fil.: 27 x 1	steel / acciaio (for Z. 11)	2000 e succ. 2000 and following	all groups / tutti i gruppi all wheels / tutte le ruote
			1999	RECORD™ - CHORUS™ all wheels / tutte le ruote
CS-101T	9s / 10s "oversize" thread/fil.: 27 x 1	titanium / titanio	2000 e succ. 2000 and following	all groups / tutti i gruppi all wheels / tutte le ruote
			1999	RECORD™ - CHORUS™ all wheels / tutte le ruote
CS-201	9s thread/fil.: 26 x 1	steel / acciaio	1999	ATHENA™ - VELOCE™ - MIRAGE™
			1998 / 1997	9s groups / gruppi 9s 9s wheels / ruote 9s
CS-001T	9s thread/fil.: 26 x 1	titanium / titanio	1999	ATHENA - VELOCE™ - MIRAGE™
			1998 / 1997	9s groups / gruppi 9s 9s wheels / ruote 9s '97 8s aluminum FW body / corpetto RL in alluminio 8s '97
CS-001V	8s thread/fil.: 29 x 1	steel / acciaio	1999 e prec. 1999 and previous	all 8s hubs (with steel FW body) tutti i mozzi 8s (con corpetto RL in acciaio)
CS-701	for sprockets/ per pignoni HG 10s thread/fil.: 27 x 1	steel / acciaio	2006	all Campagnolo® wheels with HG 10 type FW body / tutte le ruote Campagnolo® con corpetto RL tipo HG 10
CS-801	for sprockets/ per pignoni HG 10s thread/fil.: 27 x 1	steel / acciaio (for Z. 11)	2006	all Campagnolo® wheels with HG 10 type FW body / tutte le ruote Campagnolo® con corpetto RL tipo HG 10

RECORD™
UD™ 10s
CSK00-RE10..

* pre-assembled

DISTANZIALI / SPACERS

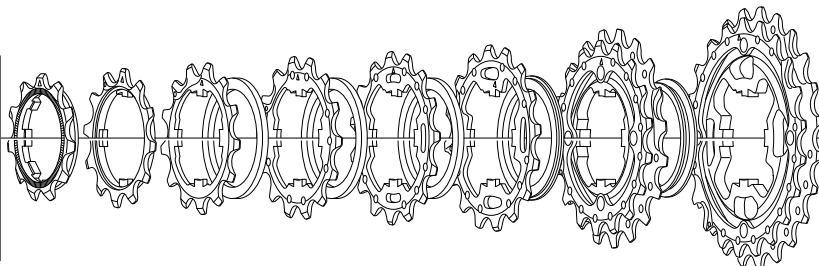
F = CS-601 (2,4 mm)

G = CS-602 (2,55 mm)

H = CS-603 (4,8 mm)

L = CS-605 (3,9 mm)

R = CS-611 (3,1 mm)



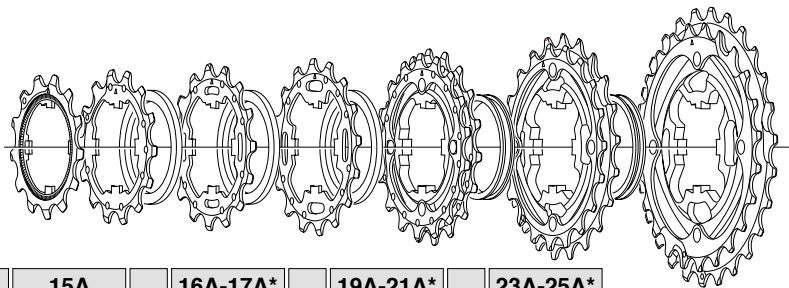
11 - 21	11A-1° 10S-011	12A-2° 10S-022		13A 10S-131	F	14A 10S-141	F	15A 10S-151	F	16A 10S-161	G	17A-18C* 10S-78CT	H	19C-21C* 10S-91CT
11 - 23	11A-1° 10S-011	12A-2° 10S-022		13A 10S-131	F	14A 10S-141	F	15A 10S-151	F	16A 10S-161	G	17A-19A* 10S-79AT	H	21A-23A* 10S-13AT
11 - 25	11A-1° 10S-011	12A-2° 10S-022		13A 10S-131	F	14A 10S-141	F	15A 10S-151	F	17G 10S-177	R	19G-21G* 10S-91GT	L	23G-25G* 10S-35GT
12 - 23	12A-1° 10S-032	13A 10S-131	F	14A 10S-141	F	15A 10S-151	F	16A 10S-161	F	17A 10S-171	G	18A-19A* 10S-89AT	H	21A-23A* 10S-113AT

DISTANZIALI / SPACERS

F = CS-601 (2,4 mm)

I = CS-604 (5 mm)

L = CS-605 (3,9 mm)



12 - 25	12A-1° 10S-032	13A 10S-131	F	14A 10S-141	F	15A 10S-151	F	16A-17A* 10S-67A	I	19A-21A* 10S-91AT	L	23A-25A* 10S-35AT
13 - 26	13A-1° 10S-023	14A 10S-141	F	15A 10S-151	F	16A 10S-161	F	17A-18C* 10S-78C	I	19C-21C* 10S-91CT	L	23C-26C* 10S-36CT
13 - 29	13A-1° 10S-023	14A 10S-141	F	15A 10S-151	F	16A 10S-161	F	17A-19A* 10S-79A	I	21A-23A* 10S-13AT	L	26A-29A* 10S-69AT

SPROCKETS

RECORD™ UD™
TITANIUM 10s
CSK00-RE10..T

DISTANZIALI / SPACERS

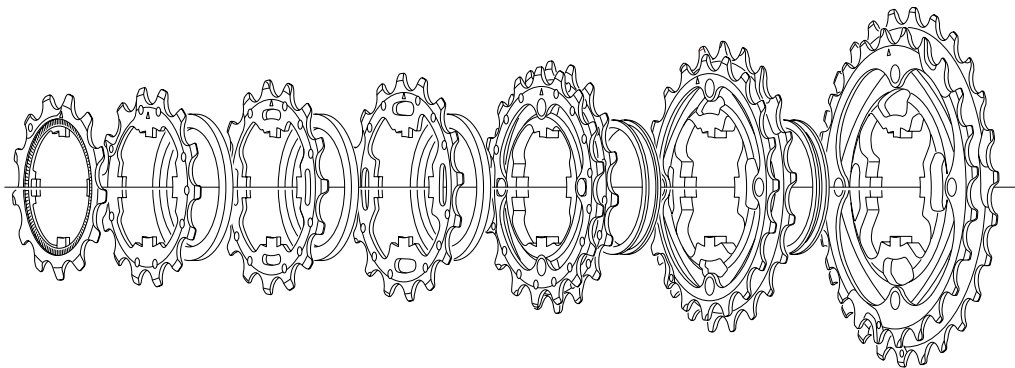
F = CS-601 (2,4 mm)

G = CS-602 (2,55 mm)

H = CS-603 (4,8 mm)

I = CS-604 (5 mm)

L = CS-605 (3,9 mm)



11 - 23	11A-1° 10S-011	12A-2° 10S-022T		13A 10S-131T	F	14A 10S-141T	F	15A 10S-151T	F	16A 10S-161T	G	17A-19A* 10S-79AT	H	21A-23A* 10S-13AT
12 - 25	12A-1° 10S-012T	13A 10S-131T	F	14A 10S-141T	F	15A 10S-151T	F	16A-17A* 10S-67AT	I	19A-21A* 10S-91AT	L	23A-25A* 10S-35AT		
13 - 26	13A-1° 10S-013T	14A 10S-141T	F	15A 10S-151T	F	16A 10S-161T	F	17A-18C* 10S-78CT	I	19C-21C* 10S-91CT	L	23C-26C* 10S-36CT		

* pre-assembled

CHORUS™
UD™ 10s
CSK00-CH10..

DISTANZIALI / SPACERS

F = CS-601 (2,4 mm)

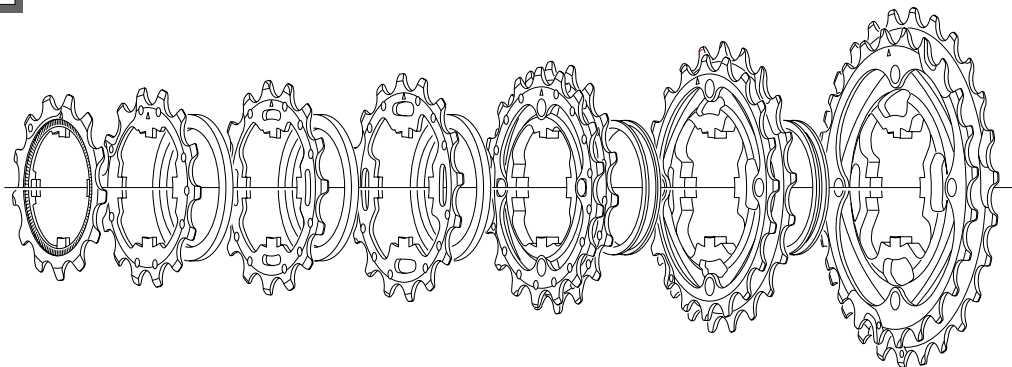
G = CS-602 (2,55 mm)

H = CS-603 (4,8 mm)

I = CS-604 (5 mm)

L = CS-605 (3,9 mm)

R = CS-611 (3,1 mm)



11 - 23	11A-1° 10S-011	12A-2° 10S-022		13A 10S-131	F	14A 10S-141	F	15A 10S-151	F	16A 10S-161	G	17A-19A* 10S-79A	H	21A-23A* 10S-13A
11 - 25	11A-1° 10S-011	12A-2° 10S-022		13A 10S-131	F	14A 10S-141	F	15AA 10S-151	F	17G 10S-177	R	19G-21G* 10S-91G	L	23G-25G* 10S-35G
12 - 25	12A-1° 10S-032	13A 10S-131	F	14A 10S-141	F	15A 10S-151	F	16A-17A* 10S-67A	I	19A-21A* 10S-91A	L	23A-25A* 10S-35A		
13 - 26	13A-1° 10S-023	14A 10S-141	F	15A 10S-151	F	16A 10S-161	F	17A-18C* 10S-78C	I	19C-21C* 10S-91C	L	23C-26C* 10S-36C		
13 - 29	13A-1° 10S-023	14A 10S-141	F	15A 10S-151	F	16A 10S-161	F	17A-19A* 10S-79A	I	21A-23A* 10S-13A	L	26A-29A* 10S-69A		

* pre-assembled

CENTAUR™
UD™ 10s
CS4-CEX..

DISTANZIALI / SPACERS

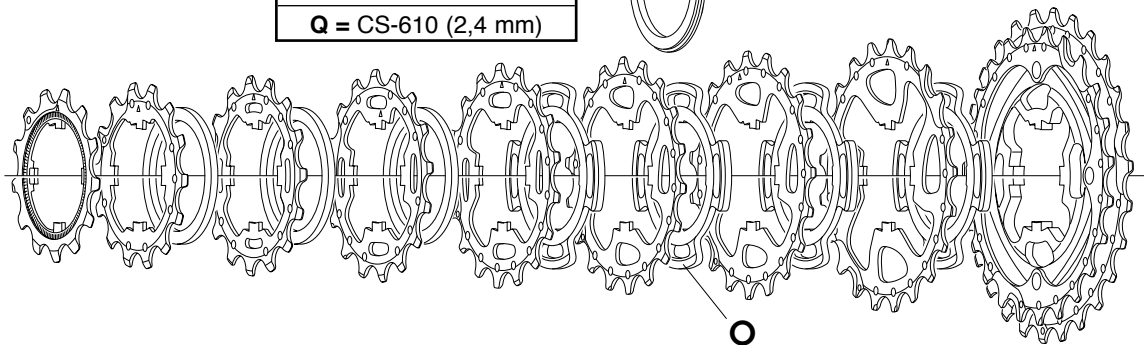
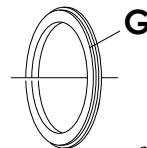
G = CS-602 (2,55 mm)

M = CS-606 (3,05 mm)

N = CS-607 (2,4 mm)

O = CS-609 (2,55 mm)

Q = CS-610 (2,4 mm)



11 -23	11A-1° 10S-011	12A-2° 10S-022		13A 10S-131	Q	14A 10S-141	Q	15A 10S-151	Q	16A 10S-161	G	17A 10S-171	N	19A 10S-191	M	21A-23A* 10S-13A
11 -25	11A-1° 10S-011	12A-2° 10S-022		13A 10S-131	Q	14A 10S-141	Q	15A 10S-151	Q	17G 10S-177	O	19GG 10S-197	N	21G 10S-217	M	23G-25G* 10S-35G
12 - 25	12A-1° 10S-032	13A 10S-131	Q	14A 10S-141	Q	15A 10S-151	Q	16A 10S-161	Q	17A 10S-171	O	19A 10S-191	N	21A 10S-211	M	23A-25A* 10S-35A
13 - 26	13A-1° 10S-023	14A 10S-141	Q	15A 10S-151	Q	16A 10S-161	Q	17A 10S-171	N	18C 10S-183	O	19C 10S-193	N	21C 10S-213	M	23C-26C* 10S-36C
13 - 29	13A-1° 10S-023	14A 10S-141	Q	15A 10S-151	Q	16A 10S-161	Q	17A 10S-171	N	19A 10S-191	O	21A 10S-211	N	23A 10S-231	M	26A-29A* 10S-69A

* pre-assembled

VELOCE™ UD™
10s
CS4-VLX..

DISTANZIALI / SPACERS

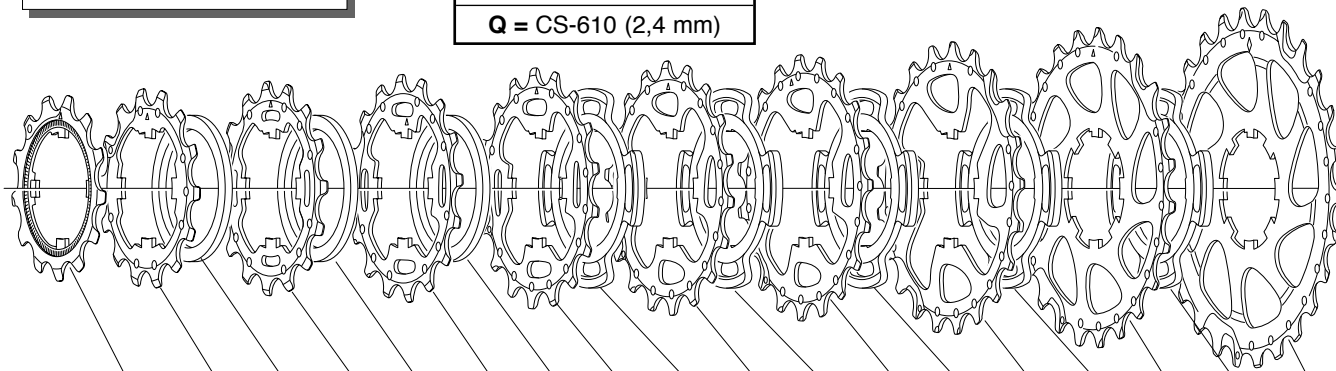
N = CS-607 (2,4 mm)

O = CS-609 (2,55 mm)

P = CS-608 (1,6 mm)

Q = CS-610 (2,4 mm)

MIRAGE UD 10s compatible

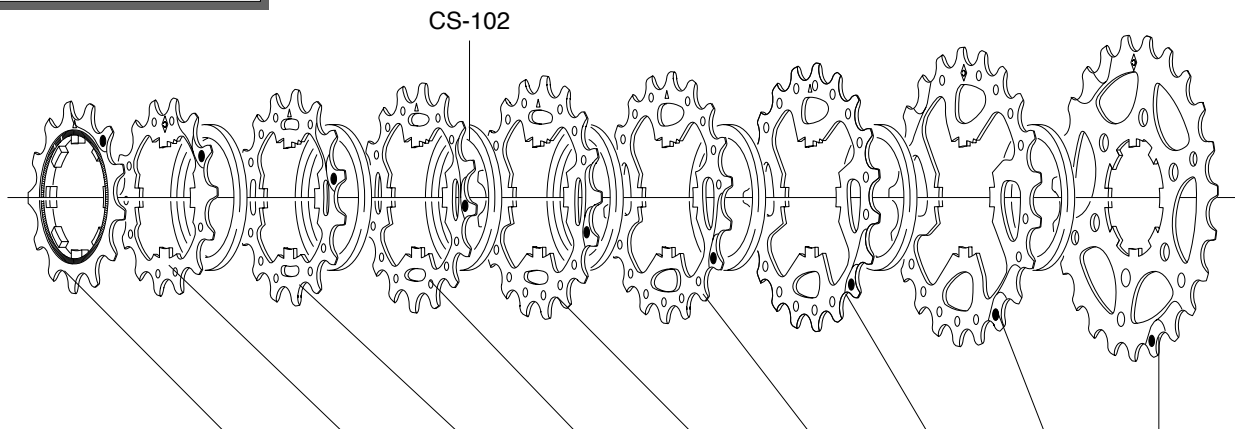


11 - 25	11A-1° 10S-011	12A-2° 10S-022		13A 10S-131	Q	14A 10S-141	Q	15A 10S-151	Q	17G 10S-177	O	19G 10S-197	N	21G 10S-217	N	23G 10S-237	P	25G 10S-257
12 - 23	12A-1° 10S-032	13A 10S-131	Q	14A 10S-141	Q	15A 10S-151	Q	16A 10S-161	Q	17A 10S-171	O	18C 10S-183	N	19C 10S-193	N	21C 10S-213	P	23C 10S-233
12 - 25	12A-1° 10S-032	13A 10S-131	Q	14A 10S-141	Q	15A 10S-151	Q	16A 10S-161	Q	17A 10S-171	O	19A 10S-191	N	21A 10S-211	N	23A 10S-231	P	25A 10S-251
13 - 26	13A-1° 10S-023	14A 10S-141	Q	15A 10S-151	Q	16A 10S-161	Q	17A 10S-171	N	18C 10S-183	O	19C 10S-193	N	21C 10S-213	N	23C 10S-333	P	26C 10S-263
13 - 29	13A-1° 10S-023	14A 10S-141	Q	15A 10S-151	Q	16A 10S-161	Q	17A 10S-171	N	19A 10S-191	O	21A 10S-211	N	23A 10S-231	N	26A 10S-261	P	29A 10S-291
14 - 23	14A-1° 10S-014	15A 10S-151	Q	16A 10S-161	Q	17A 10S-171	Q	18C 10S-183	N	19C 10S-193	O	20D 10S-204	N	21D 10S-214	N	22D 10S-224	P	23D 10S-234

SPROCKETS

VELOCE™ UD 9s
CS01-EC09..

MIRAGE UD 9s compatible



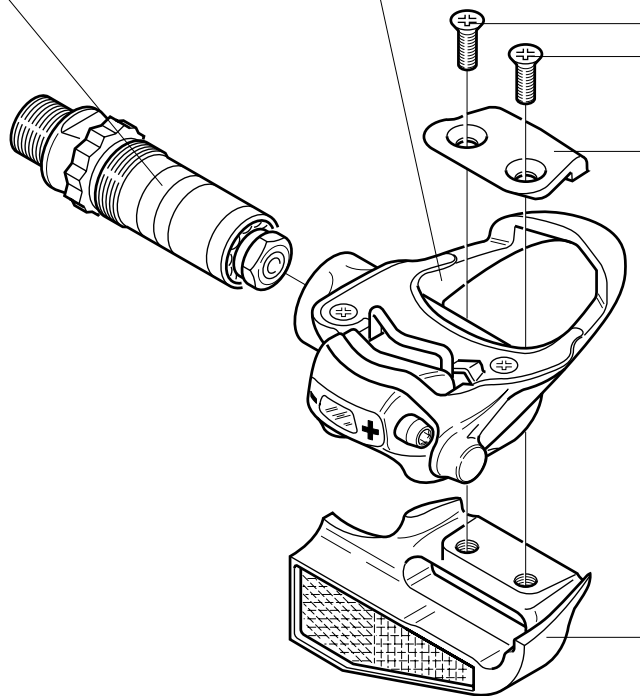
12 - 23	12A-1° 9S-113	13A 9S-131	14A 9S-141	15A 9S-151	16A 9S-161	17A 9S-171	19A 9S-191	21A 9S-211	23A 9S-231
13 - 23	13A-1° 9S-114	14A 9S-141	15A 9S-151	16A 9S-161	17A 9S-171	18C 9S-183	19C 9S-193	21C 9S-213	23C 9S-233
13 - 26	13A-1° 9S-114	14A 9S-141	15A 9S-151	16A 9S-161	17A 9S-171	19A 9S-191	21A 9S-211	23A 9S-231	26A 9S-261
13 - 28	13B-1° 9S-015	14B 9S-142	15B 9S-152	17B 9S-172	19A 9S-191	21A 9S-211	23A 9S-231	25A 9S-251	28A 9S-281
14 - 28	14A-1° 9S-016	15A 9S-151	16A 9S-161	17A 9S-171	19A 9S-191	21A 9S-211	23A 9S-231	25A 9S-251	28A 9S-281

RECORD™
PRO-FIT PLUS™
 PD01-RE

CHORUS™
PRO-FIT PLUS™
 PD01-CH

RECORD™	R	PD-RE303
	L	PD-RE304
CHORUS™	R	PD-CH303
	L	PD-CH304

RECORD™	R	PD-RE301
	L	PD-RE302
CHORUS™	R	PD-CH301
	L	PD-CH302

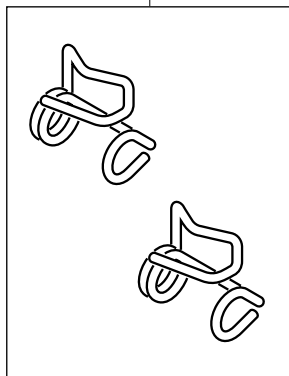


PD-RE108
 (2 pcs.)

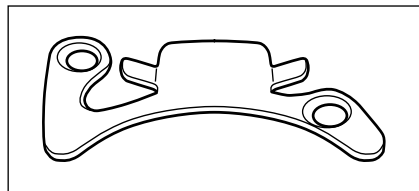
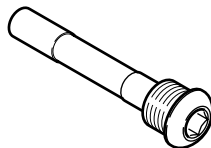
PEDALS

**PRO-FIT™ /
PRO-FIT PLUS™
SPARE PARTS**

R + L: PD-RE105

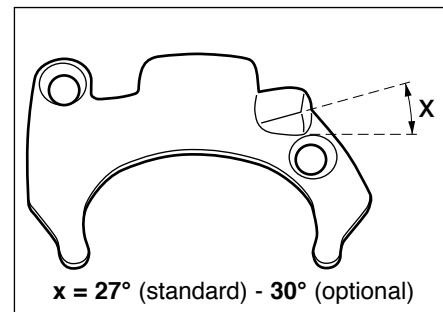
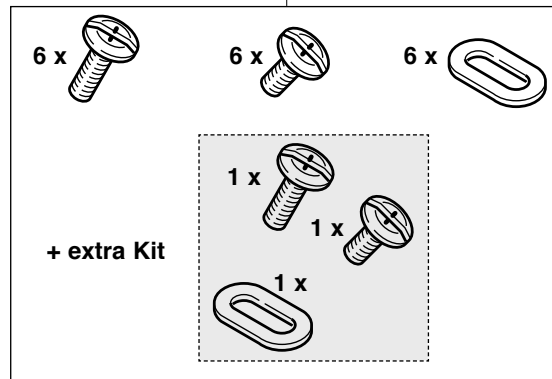


PD-RE107



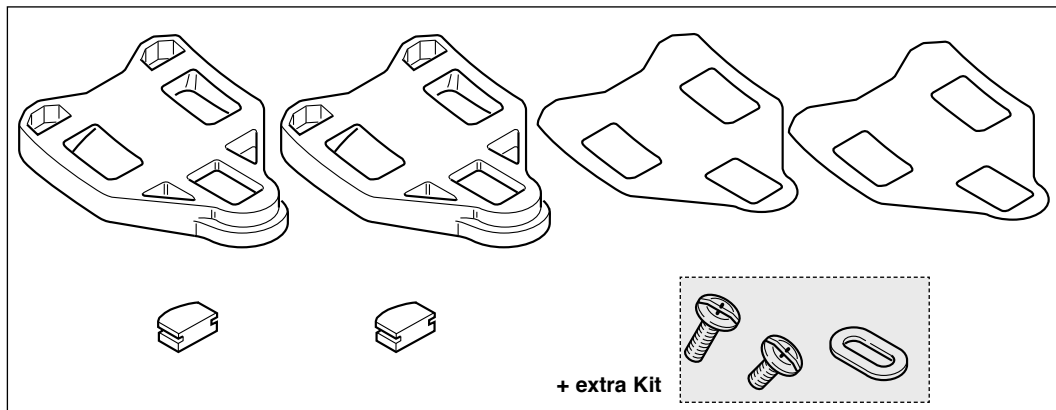
**PRO-FIT™
PD-RE111**

PD-RE116



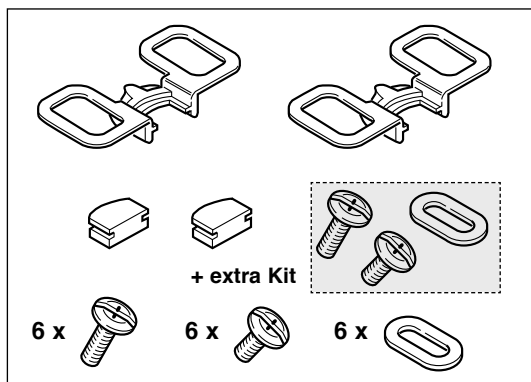
**PRO-FIT PLUS™
PD-RE110: standard - 27°
PD-RE109: HRE - optional - 30°**

**PRO-FIT™ /
PRO-FIT PLUS™
SPARE PARTS**



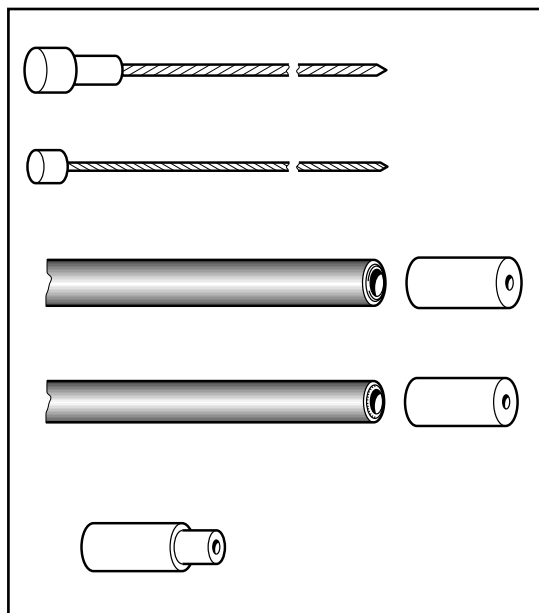
**FLOATING CLEATS
PD-RE020**

**FIXED CLEATS
PD-RE021**



PD-RE200

CABLES & CASINGS complete sets



**ERGOPOWER™
CONTROL LEVERS**

CG-ER500 *

CG-ER201BP (240 pcs. / pz.)

TRADITIONAL

Brakes

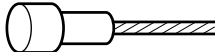

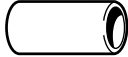
CG-BR201





Deraillleurs

CG-DD101

* incl. brake housing ferrules / incl. capi guaina

CABLES & CASINGS SPARE PARTS

		FRONT	REAR
BRAKES		Ø 1,6 mm L. 800 mm CG-CB003	Ø 1,6 mm L. 1600 mm 10-CG-CB013 (10 pcs.) - 50-CG-CB013 (50 pcs.)
		Ø 5 mm L. 580 mm CG-CS014	Ø 5 mm L. 1250 mm CG-CS002
		Ø 6 mm CG-CS011 (not sealed / senza guarnizione)	

DERAILLEURS	 Ø 1,2 mm	ERGOPOWER	L. 1600	CG-CB014
		ERGOPOWER	L. 2000	10-CG-CB009 (10 pcs.) - 50-CG-CB009 (50 pcs.)
		SHIFTING LEVERS	L. 830	CG-CB011
		SHIFTING LEVERS	L. 1600	CG-CB014
	 Ø 4,5 mm	ERGOPOWER	L. 680	CG-CS015
		ERGOPOWER	L. 330	CG-CS008
		Ø 5,7 mm CG-CS012 (sealed / con guarnizione)		
		Ø 5,7/4 mm CG-CS013 (sealed / con guarnizione)		

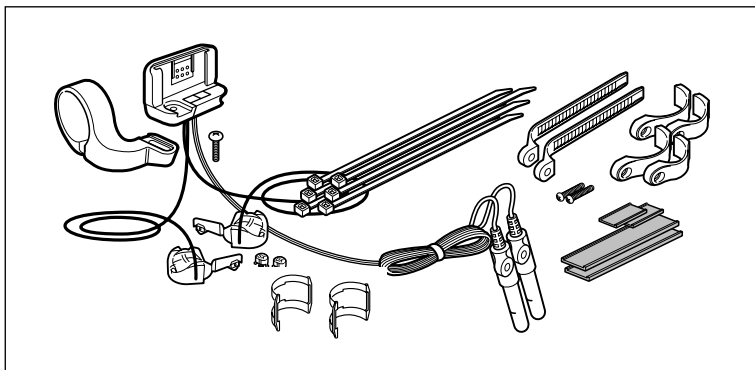
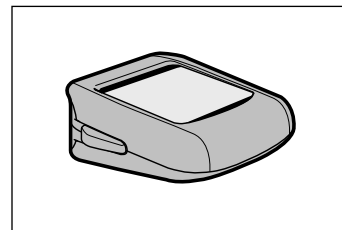
ErgoBrain10™

MAIN UNIT / SOLO COMPUTER

ErgoBrain10™

CI03-EB10C3

(triple compatible)

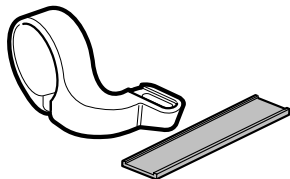


ASSEMBLY KIT / KIT D'INSTALLAZIONE

ErgoBrain10™

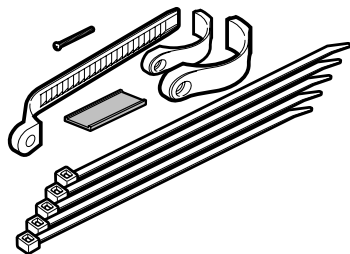
CI00-EB10B2

(for 10s drivetrain / per trasmissione 10s)



31,7 mm arm / fascetta 31,7 mm

CI-EB001



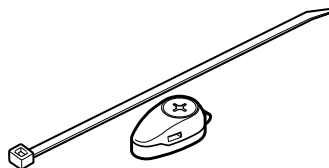
Sensor attachment / fascetta sensori

CI-EB002



push buttons / copripulsanti

CI-EB009



CDC magnet / magnete cadenza

CI-EB003



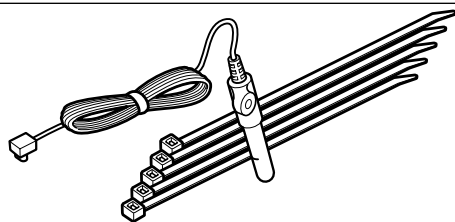
CDC PRO-FIT pedal magnet /
magnete cadenza pedale PRO-FIT

CI-EB004



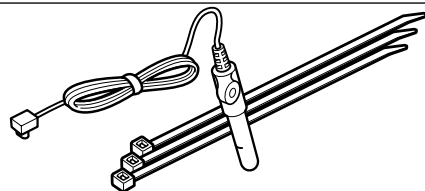
SPD magnet / magnete velocità

CI-EB008



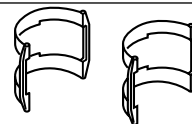
CDC sensor / sensore cadenza

CI-EB006



SPD sensor / sensore velocità

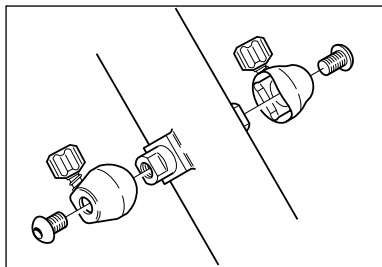
CI-EB007



spacers / distanziali

CI-EB010

**ERGOPOWER™
ERGOPOWER™ FB
CASING RETAINER CLAMPS**



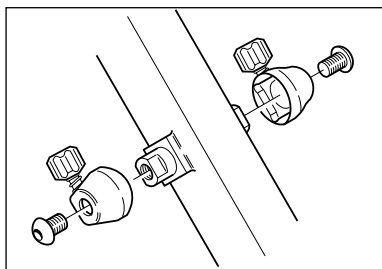
FOR ROUND DOWN TUBE

Aluminum:

EC-RE001 (1 pc) - 25-EC-RE001 (25 pcs)

Resin:

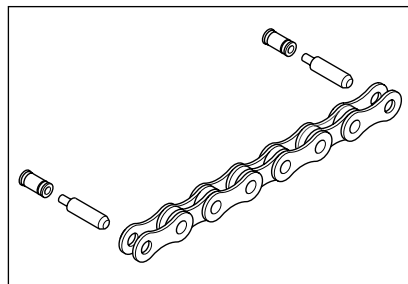
EC-AT001 (1 pc) - 25-EC-AT001 (25 pcs)



FOR FLAT DOWN TUBE

Aluminum:

EC-RE002 (1 pc)

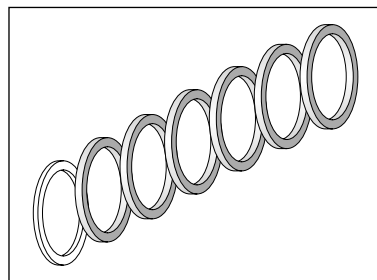


CN-RE400

HD-Link™

Ultra Narrow™ (5,9 mm)

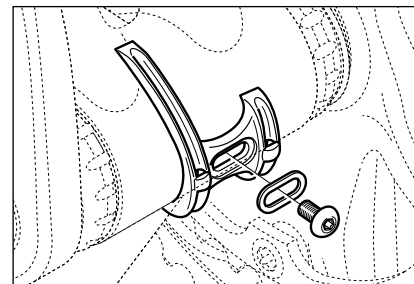
for C10™ Ultra Narrow™ chains



KIT-03

Transforms a Veloce™ 9s sprocket
set into a 8s cassette.

Only for 9s/10s hub/wheels.



PL6-RE

RECORD™

cable guide plate (resin)



WB-100

Bag for 1 wheel.

RD-RE700	rotelline cambio 10s (8,4 mm)	10s (8,4 mm) rear derailleur pulleys	jeu de galets dérail. arr. 10s (8,4 mm)
RD-RE600	rotelline cambio 9s (8,8 mm)	9s (8,8 mm) rear derailleur pulleys	jeu de galets dérail. arr. 9s (8,8 mm)
RD-RE500	rotelline cambio 8s (9,8 mm)	8s (9,8 mm) rear derailleur pulleys	jeu de galets dérail. arr. 8s (9,8 mm)
EC-RE600	coprisupporti EP dx + sx "new style"	right + left EP rubber hoods (new style)	repose-main EP droit + gauche "new style"
EC-RE500	coprisupporti EP dx + sx "old style"	right + left EP rubber hoods (old style)	repose-main EP droit + gauche "old style"
EC-CE500	coprisupporti EP ESCAPE™ dx + sx	right + left EP ESCAPE™ rubber hoods	repose-main EP ESCAPE™ droit + gauche
BR-RE701	pattini freno per HYPERON™ e BORA™ tub. per caliper Campagnolo®	brake pads for HYPERON™ and BORA™ 2003 tub. for Campagnolo® caliper brakes	patins de frein HYPERON™ et BORA™ 2003 boyaux pour caliper Campagnolo®
BR-RE702	pattini freno per HYPERON™ copertoncino per freni caliper Campagnolo®	brake pads for HYPERON™ clincher for Campagnolo® caliper brakes	patins de frein HYPERON™ pnéus étroits pour freins caliper Campagnolo®
BR-701X	pattini freno per HYPERON™ e BORA™ tubolare per freni Dura-Ace	brake pads for HYPERON™ and BORA™ 2003 tubular for Dura-Ace brakes	patins de frein HYPERON™ et BORA™ 2003 boyaux pour freins Dura-Ace
BR-702X	pattini freno per HYPERON™ copertoncino per freni Dura-Ace	brake pads for HYPERON™ clincher for Dura-Ace brakes	patins de frein HYPERON™ pnéus étroits pour freins Dura-Ace
BR-RE700	pattini freno per freni caliper	brake pads for caliper brakes	patins de frein pour freins caliper
BR-RE600	pattini freno per freni caliper	brake pads for caliper brakes	patins de frein pour freins caliper
BR-VL500	pattini freno per freni Linear Pull Cantilever	brake pads for Linear Pull Cantilever brakes	patins de frein pour freins Linear Pull Cantilever
BR-VL600	pattini freno compl. per freni caliper	compl. brake pads for caliper brakes	patins de frein compl. pour freins caliper
BR-MI600	pattini freno compl. per freni caliper	compl. brake pads for caliper brakes	patins de frein compl. pour freins caliper
BL-RE500	coprisupporti tradizionali dx + sx (gamma 2000 e prec.)	r + l traditional rubber hoods (2000 range and prev.)	repose-main trad. droit + gauche (gamme 2000 et préc.)
PD-RE020	tacchette pedali (con gioco)	self-aligning pedal cleats	plaques avec jeu pour pédales
PD-RE021	tacchette pedali (senza gioco)	fixed pedal cleats	plaques sans jeu pour pédales
PD-RE200	denti d'aggancio pedali + viti	pedal engaging hooks + screws	dispositifs d'accrochage pédales + vis
PD-RE116	viti fissaggio tacchette pedali	pedal cleats fixing screws	vis fixation plaques pédales
CG-ER500	cavi e guaine EP (con capi-guaina)	EP cables/casings (with brake housing ferrules)	câbles et gaines EP (avec butée de gaines)
CN-RE400	HD-LINK™ per catene C10™ Ultra Narrow™ (5,9 mm)	HD-LINK™ for C10™ Ultra Narrow™ (5,9 mm) chains	HD-LINK™ pour chaîne C10™ Ultra Narrow™ (5,9 mm)